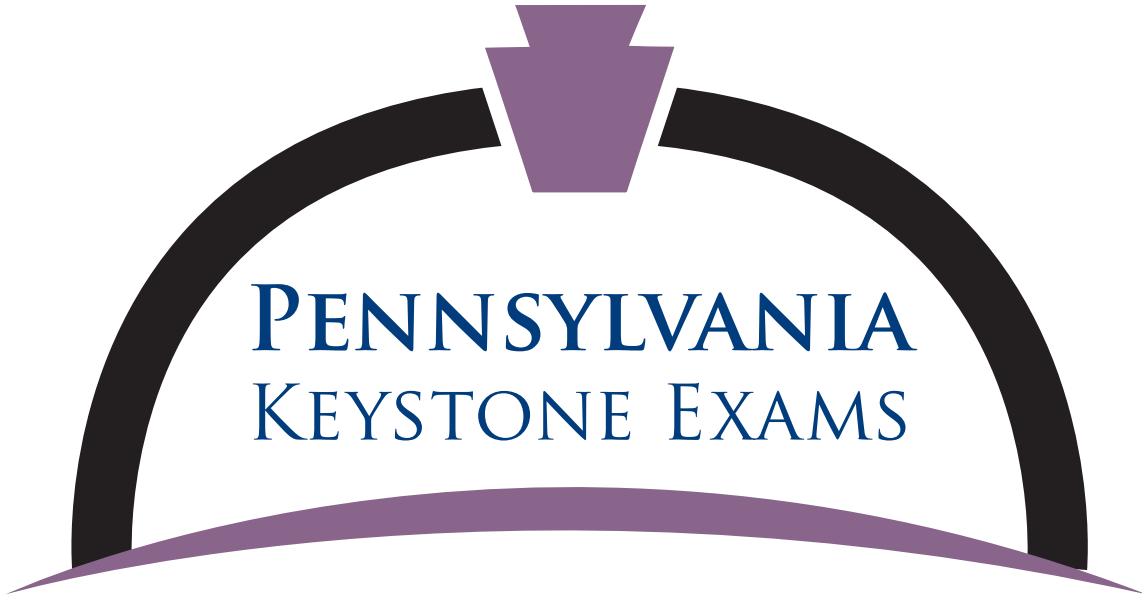




**pennsylvania**  
DEPARTMENT OF EDUCATION



ALGEBRA I AND BIOLOGY KEYSTONE EXAMS  
SPANISH TRANSLATION

SPRING 2024

DIRECTIONS FOR PAPER AND PENCIL  
ADMINISTRATION

SPRING 2024



|   |           |
|---|-----------|
| <b>PART I: IMPORTANT INFORMATION</b> .....  | <b>1</b>  |
| A. Contact Information Concerning Questions.....  | 2         |
| B. Maintain Exam Security .....   | 2         |
| 1. Test Security .....  | 3         |
| 2. Reporting Irregularities.....  | 4         |
| 3. Avoiding Inappropriate Test-Taking Strategies.....   | 4         |
| 4. Storing Secure Materials.....  | 4         |
| <b>PART II: GENERAL ASSESSMENT INFORMATION</b> .....  | <b>5</b>  |
| A. Summary of the Test Administrator’s Responsibilities.....                                  | 5         |
| B. Follow the Exam Schedule Set by the School Assessment Coordinator.....                     | 5         |
| C. Exam Administration Procedures .....   | 6         |
| D. Prepare the Students for the Exam.....   | 7         |
| E. Prepare the Classroom for the Exam .....   | 8         |
| F. Required Exam Materials .....  | 9         |
| G. Organize the Exam Materials .....  | 10        |
| H. Damaged Answer Booklets.....   | 10        |
| I. Test Management Concerns.....  | 11        |
| J. Spanish Translation .....  | 11        |
| K. General Organization of the Exam .....   | 12        |
| L. Code of Conduct for Test Takers .....  | 12        |
| M. Display Exam Information.....  | 12        |
| N. Extended Exam Time.....  | 13        |
| O. Exam Administration Reminders .....  | 14        |
| <b>PART III: DIRECTIONS FOR ADMINISTERING MODULE 1</b> .....                                  | <b>15</b> |
| A. Getting Started with the Exam .....  | 15        |
| B. Reviewing Barcode (District/School or Student Precode) Labels .....                        | 16        |
| C. Administering the Algebra I or Biology Exam – Module 1 (Spanish and English Scripts) ..... | 17        |
| 1. Algebra I.....   | 18        |
| 2. Biology .....  | 20        |
| 3. Both Exams .....   | 22        |
| <b>PART IV: DIRECTIONS FOR ADMINISTERING MODULE 2</b> .....                                   | <b>26</b> |
| A. Administering the Algebra I or Biology Exam – Module 2 (Spanish and English Scripts) ..... | 26        |
| 1. Algebra I.....   | 26        |
| 2. Biology .....  | 29        |
| 3. Both Exams .....   | 31        |
| <b>PART V: AFTER EXAM ADMINISTRATION</b> .....  | <b>35</b> |
| A. After Testing Is Complete.....   | 35        |
| B. Return Materials .....   | 35        |

APPENDICES

|   |           |
|---|-----------|
| <b>Appendix A: Handbook for Secure Test Administration.....</b>   | <b>37</b> |
| <b>Appendix B: Keystone Exam Test Security Certification Form<br/>(Test Administrator and Proctor) .....</b>    | <b>49</b> |
| <b>Appendix C: Algebra I and Biology Exam Directions—Spanish Translation.....</b>                               | <b>51</b> |
| <b>Appendix D: Code of Conduct for Test Takers—Spanish Translation .....</b>                                    | <b>57</b> |
| <b>Appendix E: Pennsylvania Calculator Policy—Spanish Translation .....</b>                                     | <b>61</b> |
| <b>Appendix F: Algebra I and Biology Constructed-Response Scoring Guidelines—<br/>Spanish Translation .....</b> | <b>65</b> |

This manual is to be used for the paper and pencil administration of the **Algebra I and Biology Spring 2024 Keystone Exams for students who will be using the Spanish translation form**. This manual provides the Test Administrator (TA) with directions that will ensure a standard assessment environment in schools throughout the Commonwealth of Pennsylvania. The administration of this exam may differ from other assessments the TA/Proctor has given; therefore, **TAs/Proctors are to become thoroughly familiar with this manual and the procedures for administering the exam before the testing window (May 13–24, 2024)**.

**New This Year:**

- For Algebra I and Biology, the test and answer booklets have been combined into one document. The combined booklet will serve as the student’s answer document so a precode label or district/school label must be affixed to the front cover to indicate the booklet is to be scored.
- The directions for Algebra I constructed-response questions have expanded. Please see the second bullet.

**Changes for Spring 2023–2024 Keystone Exams**

- The Keystone Algebra I and Biology test and answer booklets have been combined into one booklet. The Algebra I and Biology DFAs refer to the booklet as the “combined test and answer booklet.”
- The Spanish translation booklets contain Spanish only and the booklets are a combined test and answer booklet. The Spanish translation booklet will be shrink-wrapped and shipped together with an English booklet for reference.
- The Calculator Policy has been updated to include language about testing mode or exam mode. (Appendix E)

The majority of test questions can be answered by contacting PA Customer Service. If you have other questions or concerns refer to the table on next page.

**A. Contact Information Concerning Questions**

| Topic or Subject  | Contact Person / Telephone                | Email Address                             |
|---|---|---|
| DRC PA Customer Service   | 800-451-7849                              | PACustomerService@DataRecognitionCorp.com |
| Test Security/Irregularities – Please use the email for a more rapid and efficient response   | 844-418-1651                              | ra-edirregularities@pa.gov                |
| General PSSA and Keystone Exam Testing Questions  | Division of Assessment and Accountability | ra-ed-pssa-keystone@pa.gov                |
| Opting Students Out of Testing  | Brian Truesdale – 717-214-5433            | btruesdale@pa.gov                         |
| Testing Irregularities  | Jay Gift – 717-783-1144                   | rgift@pa.gov                              |
| Testing Accommodations (IEP and 504, Regular Education, EL)   | Dr. Beth Gannon – 717-346-9399            | ra-eduniqueaccom@pa.gov                   |
| ELA, Keystone Exam Literature, EL Accommodations  | Dr. Beth Gannon – 717-346-9399            | egannonrit@pa.gov                         |
| Math, Keystone Exam Algebra I   | Dr. Megan Clementi – 717-783-6543         | mclementi@pa.gov                          |
| Science, Keystone Exam Biology, Notify Changes in Testing Dates and/or Times, Testing Window Exceptions, and Cell Phone Issues Not Related to Test Security | Craig Weller – 717-525-5825               | crweller@pa.gov                           |

**If a test security violation is suspected, contact the School Assessment Coordinator (SAC) immediately. If you believe the SAC may have involvement in the violation, immediately contact the Pennsylvania Department of Education (PDE) directly at ra-edirregularities@pa.gov or 844-418-1651. Sending an email with a detailed subject line will provide a faster response from PDE than calling the toll-free number. Please ensure that you utilize only the email account or telephone number provided here for test security violation.**

**B. Maintain Exam Security**

The Pennsylvania Keystone Exams are a measure of individual student achievement conducted by the PDE. Any deviation from the exam procedures outlined in this manual (including, but not limited to, group work, teacher coaching, teaching or releasing of the performance tasks or exam questions, and using old, non-released Pennsylvania assessment items as preparation tools) is strictly prohibited and is considered a violation of exam security. Those individuals who divulge exam questions, falsify student scores, or compromise the integrity of the state assessment system in any manner will be subject to professional disciplinary action under the Professional Educator Discipline Act, 24 P.S. § 2070.1a et seq, including a private reprimand, a public reprimand, a suspension of their teaching certificate(s), a revocation of their teaching certificate(s), and/or a suspension or prohibition from being employed by a charter school. In this regard, an educator is any individual who holds public or private academic school certification and all charter and cyber charter school staff members and contracted educational providers who would be required to hold certification if they served in a traditional public school.

In order to ensure the validity and security of the Keystone Exams, all TAs and Proctors must read and understand the *Handbook for Secure Test Administration*. The *Handbook for Secure Test Administration* is Appendix A of this manual. In addition, the *Handbook for Secure Test Administration* is a standalone document. It also can be found in the *Handbook for Assessment Coordinators*. Both are posted on the PDE website:

[www.education.pa.gov](http://www.education.pa.gov) [Roll over 'DATA AND REPORTING' in the menu at the top of the page. Select 'ASSESSMENT AND ACCOUNTABILITY.' Click on the link that reads 'KEYSTONE EXAMS.' Then click on 'ADMINISTRATION MATERIALS' under 'TESTING.']

Students may not discuss, disseminate, or otherwise reveal the assessment content to others. This includes talking with others about questions on the test during or after the test. Students will be subject to discipline based on the Local Education Agency's (LEA's) policy and procedures. Students should be assured that they may discuss the testing process or issues of concern with their parents/guardians.

## 1. Test Security

- a. TAs and Proctors must complete the online Pennsylvania State Test Administration Training (PSTAT), found at [www.pstattraining.net](http://www.pstattraining.net), once every school year for which they are a TA or Proctor. The PSTAT must be completed prior to working on any Keystone Exam tasks.
- b. District Assessment Coordinators (DACs), School Assessment Coordinators (SACs), TAs/Proctors, Principals, and all other individuals who are involved in this assessment program must maintain the security of all exam materials. Together, they share the responsibility for ensuring that all exam materials and student responses are handled securely, confidentially, and in accordance with security mandates and other general procedures. These include, but are not limited to, the following:
  - i. Except where allowed by a specific written accommodation, only students being tested are allowed to view the content of the exam materials.
  - ii. No secure materials from the exam may be copied, photographed, or recorded in any manner.
  - iii. Student responses must not be reviewed for accuracy or completeness by anyone other than the student.
  - iv. Students may not review responses at any time other than during the administration of an exam module.
- c. Every TA/Proctor involved in the administration of any Keystone Exam must read, sign, and date a *Keystone Exam Test Security Certification Form*. This certification must be signed and dated after completing administration of all Keystone Exams within this testing window. The *Keystone Exam Test Security Certification Form* certifies that all security measures for the Keystone Exams were maintained, including, but not limited to, the following:
  - i. Following test security regulations and procedures
  - ii. Handling secure assessment materials appropriately
  - iii. Maintaining confidentiality of information contained within secure assessment materials

A copy of the *Keystone Exam Test Security Certification Form (Test Administrator and Proctor)* is provided in Appendix B of this manual and in the *Keystone Exams Handbook for Assessment Coordinators*. Prior to the administration of the exam, the SAC will distribute copies of this certification to all TAs and Proctors involved in the administration of this Keystone Exam. Prior to receiving any exam materials or participating in the administration of the Keystone Exams in any way, the TA/Proctor must read and understand the *Keystone Exam Test Security Certification Form*. Upon completion of the exam administration, the form must be signed, dated, and returned to the SAC.

## 2. Reporting Irregularities

If a test security violation is suspected, contact the SAC immediately. If you believe the SAC may have involvement in the violation, immediately contact PDE directly at [ra-edirregularities@pa.gov](mailto:ra-edirregularities@pa.gov) or 844-418-1651. Sending an email with a detailed subject line will provide a faster response from PDE than calling the toll-free number. Please ensure that you utilize only the email account or telephone number provided here.

## 3. Avoiding Inappropriate Test-Taking Strategies

Every combined test and answer booklet will be processed by scanners that detect all pencil marks. As such, it is not appropriate to have students taking a paper assessment eliminate answers by striking through an answer bubble or by bubbling multiple answers and later erasing. Likewise, students should not make any extraneous marks in the combined test and answer booklet (e.g., crossing out answers believed to be incorrect). Students must mark their final answers in the appropriate locations in their booklet. Students must not discuss, disseminate, or otherwise reveal the assessment content to others.

## 4. Storing Secure Materials

All paper combined test and answer booklets are considered secure materials and must be kept in a preselected locked, secure storage area at both the district and school levels. Secure materials must never be left unattended or in open areas. TAs must not be given access to secure test materials before the administration day. Instead, TAs should only be given access to secure test materials immediately preceding test administration. **It is mandatory that school districts utilize a sign-out/sign-in sheet for distribution and collection of secure test materials.** It is recommended that TAs count the number of combined test and answer booklets received and returned in the presence of the SAC or the SAC's designee.

- a. The *Directions for Paper and Pencil Administration* manuals are not considered secure test materials and should be provided to TAs for review prior to the assessment. TAs and Proctors should be allowed time to review the *Directions for Paper and Pencil Administration*.
- b. Each student taking the Algebra I or Biology Exams will receive **one combined test and answer booklet** for each exam as it is being administered.
- c. Scratch/grid paper and any other paper on which students have written is considered secure and must be collected at the end of each testing session to be destroyed by the SAC or the SAC's designee.

**All secure testing materials must be inventoried, counted, and returned immediately to the SAC or the SAC's designee after testing is completed. Individual restroom breaks during testing are permitted but require monitoring. Materials must be kept secure after testing and prior to shipping to Data Recognition Corporation (DRC).**



## A. Summary of the Test Administrator's Responsibilities

1. Complete the Pennsylvania State Test Administration Training (PSTAT) online module, prior to working as a TA/Proctor, one time per school year (this satisfies both the PSSA and Keystone Exam requirement for the school year).
2. Become familiar with the exam administration procedures provided in this manual.
3. Receive student exam materials from the SAC immediately prior to the testing session on the day you are scheduled to be a TA (or Proctor) for any of the Keystone Exams.
4. Alert the SAC if any student information on the label is incorrect or if the bubbled in information is incorrect and needs to be changed.
5. Look at the back cover of each booklet and ensure that your initials are correctly bubbled in the Test Administrator Initials fields. Some schools may have TAs bubble in the Test Administrator initials, and other schools may have already bubbled in the Test Administrator initials. If the initials are incorrect or missing, alert the SAC.
6. Distribute the combined test and answer booklets to the students at the time of the exam.
7. Read the directions for administration to students at the start and end of each module of the Algebra I and Biology Keystone Exams.
8. Actively monitor the exam environment during the scheduled exam time. Actively monitoring is monitoring the administration of the exam and nothing else.
9. Collect and account for (including counting the number received and returned) all student exam materials and return them to the SAC or the SAC's designee at the end of each exam session.
10. Return all scratch/grid paper and any other paper on which students have written to the SAC or the SAC's designee at the end of each exam session.
11. Return the reference sheets.
12. Review and understand the signed and dated *Keystone Exam Test Security Certification Form (Test Administrator and Proctor)* and return it to the SAC at the end of the final Keystone Exam administration.

## B. Follow the Exam Schedule Set by the School Assessment Coordinator

The Algebra I and Biology Keystone Exams must be administered within the PDE-designated exam window on the dates assigned by the LEA. The Algebra I and Biology Keystone Exams each consist of **two modules**. Each module must be scheduled as a separate exam session. Since the Keystone Exams are untimed, there may be instances in which the actual testing times take longer than the recommended testing times. **Modules must NOT be scheduled back-to-back in the morning (or in the afternoon)**. Instead, the modules must be divided across two days or divided across the morning and afternoon of the same day. The SAC must discuss the schedule with TAs at least one week prior to the exam dates. Please note that each module in these exams is designed to be completed in similar amounts of administration time. For more information on administration time and testing time, see the section titled *General Organization of the Exam* in this manual.

### C. Exam Administration Procedures

The procedures listed below must be followed prior to the administration of the Algebra I and Biology Keystone Exams.

1. The SAC will receive a Keystone Exams *Handbook for Assessment Coordinators* that provides additional detailed information about the exam. This document is also posted on these portals:
  - a. <https://pa.drceirect.com/default.aspx?leapp=General+Information> [Select 'Documents.']
  - b. [www.education.pa.gov](http://www.education.pa.gov) [Roll over 'DATA AND REPORTING' in the menu at the top of the page. Select 'ASSESSMENT AND ACCOUNTABILITY.' Click on the link that reads 'KEYSTONE EXAMS.' Then click on 'ADMINISTRATION MATERIALS' under 'TESTING.']
2. This manual must be read in advance in order to become familiar with the procedures for administering the exam. Prior to the exam administration, the TA must do the following:
  - a. Become familiar with the testing schedule and all procedures laid out in this manual.
  - b. Follow the directions of the SAC and the directions in this manual for maintaining test security.
  - c. Plan sufficient time for distribution and collection of materials.
  - d. Arrange student seating to prevent student interaction during the exam sessions.
  - e. Keep seating charts for every exam administered (recommended).
  - f. Post a "**Testing—Do Not Disturb**" sign on the door(s) to the classroom to indicate that an assessment session is taking place.
3. Prior to the assessment, ensure that all combined test and answer booklets have a barcode label affixed. For those booklets that have a District/School Label rather than a Student Precode Label, ensure that the SAC or the SAC's designee has bubbled in all appropriate information on pages 1 and 2 (see "Reviewing Barcode (District/School or Student Precode) Labels" on page 16, of this manual).
4. Review the exam directions that students will have access to during the exam administration. See Appendix C of this manual for more information.
5. Ensure that students in the testing group receive any accommodations they are entitled to and that you as the TA/Proctor are aware of how those accommodations are administered. Approved test accommodations are outlined in the current PSSA and Keystone *Accommodations Guidelines* and in the current *Accommodations Guidelines for English Learners (ELs)*. Directions for read-alouds and scribing can be found in the *Read-Aloud and Scribing Guidelines for Operational Assessments*. These documents are posted on the following portals:
  - a. <https://pa.drceirect.com/default.aspx?leapp=General+Information> [Select 'Documents.']
  - b. [www.education.pa.gov](http://www.education.pa.gov) [Roll over 'DATA AND REPORTING' in the menu at the top of the page. Select 'ASSESSMENT AND ACCOUNTABILITY.' Click on the link that reads 'KEYSTONE EXAMS.' Then click on 'ACCOMMODATIONS' under 'TESTING.']

**NOTE FOR ALGEBRA I AND BIOLOGY ONLY:** Any student, regardless of IEP status, may have a word, phrase, or test item read aloud upon request. If the student has a **documented need** for **more** than an occasional word, phrase, or test item to be read aloud, school personnel must bubble "Some test items/questions read aloud" under "Student used the following Presentation Accommodations" on page 3 of the student's combined test and answer booklet. However, it is only appropriate to read all test items aloud if this practice is documented as an accommodation. If reading the entire exam is used as an accommodation, school personnel must bubble "All test items/questions read aloud" under "Student used the following Presentation Accommodations" on page 3 of the student's combined test and answer booklet. You must follow the read-aloud guidelines when administering the Keystone Exams.

Not all accommodations that are provided on a day-to-day basis in the classroom are approved for use with the Keystone Exams; however, all accommodations in IEPs or 504 Plans must be considered when planning for the administration of the Keystone Exams.

6. This exam includes only one test form: S01. The form number S01 is on the front cover of each booklet.
7. Review and understand the signed and dated *Keystone Exam Test Security Certification Form (Test Administrator and Proctor)* and return it to the SAC at the end of the final Keystone Exam administration.

#### D. Prepare the Students for the Exam

1. Inform students in advance of the schedule for the exam sessions, as communicated by the SAC or the SAC's designee.
2. Students are not permitted to have cell phones, cameras, smartphones, smartwatches, earbuds, or any other unapproved electronic devices in their possession during the administration of the exam. Students **must** be informed of this policy in advance and should be encouraged to leave such items at home on exam days. **TAs must collect all such devices prior to distributing assessment materials.**
3. PDE encourages school districts and schools to inform students before testing begins of the locally determined ramifications/sanctions for student misconduct during the Keystone Exams. This includes, but is not limited to, discipline associated with cheating and the sharing or reproduction of test content.
4. Discuss the *Code of Conduct for Test Takers* (Appendix D) with all students prior to the scheduled exam time. It is essential that students understand the importance of each point in the *Code of Conduct for Test Takers* before testing begins. Prior to the administration, students must fill in the appropriate bubble indicating that they understand the *Code of Conduct for Test Takers* that the TA (or other school personnel) reviewed with them. TAs should answer any questions that students have to ensure that all students understand this code of conduct. Students should be assured that they may discuss the testing process or issues of concern with their parents/guardians.
5. Students may **not** use a dictionary or a thesaurus for any part of the Algebra I or Biology Keystone Exams.

**NOTE:** An exception is made for English Learners (ELs) taking any portion of the exam. They may use word-to-word bilingual/translation dictionaries that translate native language to English or English to native language. If an EL student is using this accommodation, TAs must follow the direction of the SAC for recording its use in the student's booklet. Bilingual/translation dictionaries that include word definitions or pictures are not allowed.

6. Students must use a No. 2 pencil; an ink pen may **not** be used.
7. Students may highlight, underline, and make notes on scratch paper. All scratch paper and any other paper on which students have written must be collected and returned to the SAC.

8. Students can cross out the text of the incorrect answers, but students should not make any extraneous marks on or near the answer bubbles (e.g., crossing out answer bubbles believed to be incorrect or marking multiple answer bubbles thought to be correct). Students should completely erase any extraneous marks in the combined test and answer booklet on the answer bubbles. **Students must not use highlighters on the answer bubbles.**
9. The Algebra I and Biology Keystone Exams include questions that require students to select from four possible answer choices. These multiple-choice questions and answer choices are found in the combined test and answer booklet. Students will read each question and record their answers in the spaces provided in the combined test and answer booklet. The Algebra I and Biology Keystone Exams include questions that require students to write a response. Students will read each question and write their responses in the spaces provided in the booklets. **Answers written or marked on scratch/grid paper will not be scored.**
10. Students may use calculators for the Algebra I and Biology Keystone Exams. Students who do not have an approved calculator may be given a calculator to use. Scientific and graphing calculators are allowed for Algebra I only, provided the calculator meets the guidelines in the *Pennsylvania Calculator Policy*. **Note:** Students may not share calculators during the exam. All calculators must be cleared of all stored information and programs that are not factory installed before they are used on any state exam. TAs must engage Exam Mode for calculators that have Exam Mode capability. The calculator memory must be cleared by the TA after the Keystone Exam is completed. For more information, see the *Pennsylvania Calculator Policy* in Appendix E of this manual.

| Students are permitted to  | Students are NOT permitted to   |
|--|---|
| <ul style="list-style-type: none"> <li>• use scratch/grid paper. (Students may use it to create their own graphic organizers, etc. during the exam.)</li> <li>• highlight, underline, and make notes or comments in the combined test and answer booklet. (Students should not use highlighters to mark the answer bubbles.)</li> <li>• use a calculator on the exam, including scientific and graphing calculators for Algebra I only, in accordance with the <i>Pennsylvania Calculator Policy</i> (see Appendix E of this manual).</li> </ul> | <ul style="list-style-type: none"> <li>• use preprinted graphic organizers.</li> <li>• possess or use unapproved electronic devices, including cell phones, smartphones, smartwatches, earbuds, cameras, any type of computer, or any mobile device with a camera and/or Internet access (e.g., tablets, MP3 players, gaming systems, entertainment devices) at any time during the exam.</li> <li>• possess or use dictionaries, thesauri, and spellcheckers or grammar checkers when responding to any part of the three Keystone Exams (with the exception of word-to-word translation dictionaries that may be used by EL students).</li> </ul> |

### E. Prepare the Classroom for the Exam

Good organization of exam materials and well-executed procedures will help the administration of the exam proceed smoothly.

Remove or cover with opaque materials all classroom instructional materials or any other materials that could aid students in answering test items.

**DO NOT DISPLAY:****FOR ALGEBRA I ONLY**

1. Mathematics terms and/or definitions
2. Mathematics rules and properties
3. Examples of problems and answers
4. Multiplication tables
5. Instructions on how to use a calculator
6. Illustrations or drawings of geometric shapes, algorithms, algebraic equations, graphs, number lines, etc.

**FOR BIOLOGY ONLY**

1. Biological or chemical terms and/or definitions
2. Examples of chemical reactions
3. Illustrations or drawings of cells, genetic patterns, food chains, transformations of energy, etc.

**Note:** This is not an exhaustive list. These are general examples of what is not permitted. Any materials that may contain content that could be tested must be removed or covered.

The *General Description of Scoring Guidelines* used for Algebra I and Biology constructed-response questions (in Appendix F of this manual) may be displayed in the classroom. Each student test booklet contains a copy of the general scoring guidelines for personal use. Additionally, students may have a copy of the guidelines on their desks, but it must be a clean copy.

Student seating must be arranged to prevent student interaction during the exam sessions. A quiet, calm atmosphere is conducive to concentration on the exam. Disturbances must be kept to a minimum during the exam sessions. Posting a “**Testing—Do Not Disturb**” sign on the door(s) to the classroom indicates that an exam is in session. Students should not be permitted to sharpen pencils during the exam sessions. Each student should have at least two sharpened No. 2 pencils with good erasers and some scratch/grid paper. Extra sharpened pencils must be available for students.

**F. Required Exam Materials**

The SAC will provide TAs with the appropriate exam materials on each administration day. After each module, exam materials, including scratch/grid paper and any other paper on which students have written, must be returned immediately to the SAC. Secure exam materials (excluding combined test and answer booklets returned to DRC) must be accounted for and destroyed by the SAC (or the SAC’s designee) or DAC (or the DAC’s designee) after both modules are completed. Every combined test and answer booklet has a unique security number and barcode printed on the back cover. These security numbers should be used to track the distribution and collection of secure exam materials. All secure exam materials assigned to a school must be accounted for and returned to DRC by the DAC and/or SAC. The *Directions for Paper and Pencil Administration* manual is not considered secure, and it does not have to be returned.

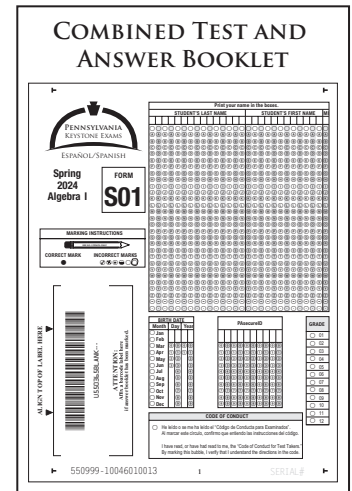
## G. Organize the Exam Materials

The person administering the assessment should have the following items:

1. One copy of the combined Algebra I and Biology Keystone Exams Spanish Translation Directions for Paper and Pencil Administration Manual
2. “Testing—Do Not Disturb” sign(s) to hang on the classroom door(s)
3. Extra sharpened pencils for students to use

Each student being tested should have the following items:

1. One copy of either the English/Español Algebra I or Biology Keystone Exam Booklet (There is only one form for the Spanish translation: S01. Students must use the Spanish booklet that will have the Student Precode Label or a District/School Label.)
1. One copy of the Algebra I or Biology English booklet with the 01 form-number designation.
2. Two sharpened No. 2 pencils with good erasers
3. Scratch/grid paper for each module
4. A reference sheet (in Spanish and English)



In addition, calculators may be used, including scientific and graphing calculators, but they may not be shared. Calculators may be provided by the school, or students may use their own calculators; however, all calculators must meet the requirements of the *Pennsylvania Calculator Policy* (Appendix E).

The *Pennsylvania Calculator Policy* is also posted on these portals:

1. <https://pa.drccedirect.com/default.aspx?leapp=General+Information> [Select ‘Documents.’]
2. [www.education.pa.gov](http://www.education.pa.gov) [Roll over ‘DATA AND REPORTING’ in the menu at the top of the page. Select ‘ASSESSMENT AND ACCOUNTABILITY.’ Click on the link that reads ‘KEYSTONE EXAMS.’ Then click on ‘TESTING INFORMATION’ on the right side of the screen. The calculator policy link is found under ‘TESTING INFORMATION.’]

## H. Damaged Answer Booklets

If a student receives an Algebra I or a Biology Keystone Exam combined test and answer booklet with damaged or missing pages, replace it with a combined test and answer booklet **of the same form number** and allow the student to continue working. If the student has already begun one of the two modules of the exam, the student should start working in the new booklet at the point where the defect was discovered and use the new booklet for the remainder of the exam. After the assessment has been completed, the SAC or the SAC’s designee must transcribe verbatim all of the student’s previous responses into the undamaged booklet. It is recommended the transcription take place in the presence of a professional staff member who will sign the appropriate *Keystone Exam Test Security Certification Form*. The student may not transcribe answers. On the new booklet, the SAC or the SAC’s designee must affix a District/School Label, write in the student’s name, and fill in the corresponding bubbles. Applicable portions of page 2 of the booklet should also be completed. **Do not insert pages from one booklet into another.** Multiple documents for one student and loose pages will **not** be scored.

The TA should give the damaged booklet to the SAC. The SAC will apply a “**Do Not Score**” label over the existing label on the front cover and return it to DRC.

## I. Test Management Concerns

A number of circumstances outlined in this manual can be resolved in consultation with the SAC. Those instances include, but are not limited to, the following:

1. Student cheating
2. Test security violation
3. Improper test administration
4. Student illness (during testing)

Issues requiring additional directions and any circumstances not outlined in this manual may need to be resolved with the SAC and/or DAC and/or PDE. Any test security violation should be reported to the SAC.

**If a test security violation is suspected, contact the SAC immediately. If you believe the SAC may have involvement in the violation, immediately contact PDE directly at [ra-edirregularities@pa.gov](mailto:ra-edirregularities@pa.gov) or 844-418-1651. Sending an email with a detailed subject line will provide a faster response from PDE than calling the toll-free number. Please ensure that you utilize only the email account or telephone number provided here.**

## J. Spanish Translation

For the spring of the 2023-2024 Keystone administration the Spanish Algebra I and Biology test booklets and answer booklets have been joined into one combined test and answer booklet (booklet) for each subject. Each will be in Spanish only.

All of the answers need to go in the Spanish booklet that has the label on the front with the student name on it.

Students may look at a booklet that has the directions and questions printed in English. Students should be reminded that their answers need to go in the Spanish booklet. The Spanish booklet will have the label with their name on it. During administration of the test, test administrators should read the Spanish-scripted text whenever the Spanish translation has been provided. As necessary, test administrators may refer to and/or read aloud the original English directions for clarification.

Students may write their answers in Spanish, in English, or a combination of Spanish and English.

### K. General Organization of the Exam

The Algebra I and Biology Keystone Exams each consist of **two modules**, and each module must be scheduled as a separate exam session. The SAC must discuss the schedule with the TA at least one week prior to the exam dates. Enough time must be scheduled for the preparation of the classroom. Each module in the Algebra I and Biology, Keystone Exams is designed to be completed in similar amounts of administration time. The following administration times are estimates and are supplied for scheduling purposes only.

| Course    | Module | Multiple-Choice Questions | Constructed-Response Questions | Administrative Tasks Estimated Time Needed (in minutes) | Actual Exam Estimated Time Needed (in minutes) | Total Administration Estimated Time Needed (in minutes) |
|-----------|--------|---------------------------|--------------------------------|---|--|---|
| Algebra I | 1      | 23                        | 4                              | 10–15   | 75   | 85–90   |
| Algebra I | 2      | 23                        | 4                              | 10–15   | 75   | 85–90   |
| Biology   | 1      | 32                        | 4                              | 10–15   | 72   | 82–87   |
| Biology   | 2      | 32                        | 4                              | 10–15   | 72   | 82–87   |

### L. Code of Conduct for Test Takers

The *Code of Conduct for Test Takers* (Appendix D) provides requirements that students must follow before, during, and after each assessment. **It is important that the *Code of Conduct for Test Takers* be reviewed with all students and that all questions are answered, such that all students understand each point in this code of conduct before the testing day. Prior to starting the assessment, students will be required to darken a bubble in their booklets to indicate that they understand the *Code of Conduct for Test Takers* that the TA (or other school personnel) reviewed with them. TAs must be prepared to answer any questions about the *Code of Conduct for Test Takers* so that all students can acknowledge their understanding of the requirements. Students should be assured that they may discuss the testing process or issues of concern with their parents/guardians.**

### M. Display Exam Information

During the exam, students are to respond to a specific set of questions. The following Algebra I and Biology Keystone Exams information must be displayed on a chalkboard, dry-erase board, or other easily visible medium during each module (test session). Only information about the current exam module should be displayed.

| Exam/<br>Examen          | Module 1 / Módulo 1   | Module 2 / Módulo 2   |
|--------------------------|---|---|
| Algebra I /<br>Álgebra I | Questions 1–27 / Preguntas 1–27<br>Booklet: / Folleto de Prueba:<br>Start on page 6 / Comienza en la página 6 | Questions 1–27 / Preguntas 1–27<br>Booklet: / Folleto de Prueba:<br>Start on page 30 / Comienza en la página 30 |
| Biology /<br>Biología    | Questions 1–36 / Preguntas 1–36<br>Booklet: / Folleto de Prueba:<br>Start on page 6 / Comienza en la página 6 | Questions 1–36 / Preguntas 1–36<br>Booklet: / Folleto de Prueba:<br>Start on page 34 / Comienza en la página 34 |



In addition, the following statements (in Spanish and in English) must be displayed on the chalkboard, dry-erase board, or other easily visible medium:

***Regresa y asegúrate de haber contestado cada pregunta en este módulo antes de cerrar el folleto. Cuando hayas cerrado tu folleto, el Administrador del examen los recogerá.***

***Go back to make sure you have answered each question in this module before closing your booklet. When you have closed your booklet, the Test Administrator will collect them.***

## N. Extended Exam Time

The Algebra I and Biology Keystone Exams are untimed exams. Not all students will finish the exam at the same time. Students should not feel rushed while they are taking the exam, and no student should be penalized for working slowly. It is equally important, however, to encourage students to work in a timely manner to finish the exam. Students should close their booklets when they have finished the module of the exam that they have been assigned. Students should keep scratch/grid paper and all other paper on which they have written separate from their booklets. TAs must collect exam materials, including scratch/grid paper, when students are finished testing rather than keeping the exam materials closed on the students' desks.

1. Students who finish early may sit quietly, read for pleasure, or read non-content-related materials until all students have finished. Reading for pleasure includes magazines along with fiction text, such as novels, short stories, poetry, etc. Reading anything that may include information related to the content area being assessed is not allowed. Written work/drawing/coloring of any kind is prohibited to ensure students are not recording secure test content.
2. TAs should follow the direction of the SAC to determine when the exam session should end and when students who have not finished should be provided an extended-time setting. This may involve using professional judgment. As a general guideline, the exam session should be ended when all students indicate they have finished an exam module. When the time scheduled for the administration of the module ends, students who have not finished should report to the extended-time location. All students should complete a module within a school day, and modules must be scheduled so that there is enough time to complete the module within the school day.
3. Students may request extended time if they indicate they have not completed an exam module. Such requests should be granted if the TA finds the request to be educationally valid. Not permitting ample time for students to complete the exam module may impact performance.
4. Students with special requirements and/or disabilities (i.e., physical, visual, auditory, or learning disabilities as defined by their IEP or service contracts) and students who work slowly may require an extended-time setting. Special exam situations should be arranged for these students.
5. When allowing extended time for an exam session for a portion of the student population:
  - a. **Do not** allow students to attend a lunch period with other students if the lunch period occurs between the original exam session and the extended exam session.
  - b. **Do not** allow students to attend any classes or related activities between the original exam session and the extended exam session.
  - c. **Do not** allow any overnight extensions. Please note exceptions are provided for students that become ill or school emergencies.
  - d. **Do not** allow students to return to a module after the completion of that module.

**Do not allow the extended exam session to be administered without monitoring. It is the responsibility of a TA to monitor any extended exam session, whether in the classroom where the exam was begun or in a separate location.**

## O. Exam Administration Reminders

It is important to use standardized exam procedures to maintain fairness for all students. Following the exam administration instructions carefully ensures that all students are tested under similar conditions in all classrooms.

### Before Exam Administration

1. Read and follow the *Handbook for Secure Test Administration* in this manual (Appendix A). In addition, the *Handbook for Secure Test Administration* is a standalone document. It also can be found in the *Handbook for Assessment Coordinators*. Both are posted on the PDE website:

*www.education.pa.gov* [Roll over 'DATA AND REPORTING' in the menu at the top of the page. Select 'ASSESSMENT AND ACCOUNTABILITY.' Click on the link that reads 'KEYSTONE EXAMS.' Then click on 'ADMINISTRATION MATERIALS' under 'TESTING.']

2. Follow the directions of the SAC and this manual for maintaining exam security.
3. Establish an environment that encourages students to approach the exam in a positive manner.
4. Check the back of each student combined test and answer booklet to make sure the bubbles for the TA's initials have been darkened. This must be done before distributing the booklets.
5. Be sure each student has the correct combined test and answer booklet.
6. Be certain to direct students as to where and how to mark or write their answers.

### During Exam Administration

1. Follow the directions of the SAC and this manual for maintaining exam security.
2. The Keystone exam directions are provided in Appendix C of this manual. They may be reread to students as needed during the administration; however, the TA may not paraphrase or offer additional information and may not give information that provides clues concerning exam questions or answer choices.
3. It is acceptable to encourage the group of students to keep trying.

- **In this Keystone Exam, the presentation of specific exam questions varies from one form to another. This variation is an intentional element of the Keystone Exams.**
- For the remainder of this manual, **indented text in bold type** is to be read aloud to students **exactly** as written. All other text is information for the TA.

When ready to start the exam, the TA should begin with *Part III: Directions for Administering Module 1* on the next page of this manual.

## A. Getting Started with the Exam

**Note:** TAs must not paraphrase the indented text in bold type. It must be read aloud to students exactly as written.

Make sure all students have two sharpened No. 2 pencils with good erasers. Students who do not have an approved calculator may be given an approved calculator to use. Students are not to have in their possession a cell phone, camera, smartphone, smartwatch, earbuds, or other unapproved electronic device. **Collect all unapproved electronic devices prior to distributing any exam materials.**

Say:

**Bienvenido al Examen Keystone de [Álgebra I o Biología]. Ahora distribuiré los folletos de pruebas y respuestas combinados en español e inglés. No abras tus folletos hasta que yo te diga.**

**Welcome to the [Algebra I or Biology] Keystone Exam. I will now distribute combined test and answer booklets in Spanish and English. Do not open your booklets until I tell you to do so.**

First, distribute booklets with front covers facing up.

Spanish booklets must have a Student Precode Label or a District/School Label if the Student Precode Label is not available. Contact the SAC if you do not have a labeled Spanish booklet for each student. If a Student Precode Label is not on a student's booklet, the SAC or the SAC's designee should have printed the student's name (as the name appears in PIMS) and bubbled in the letters corresponding to the name on the front cover and written and bubbled in the student's birth date and PAsecureID on page 1. A district/school label should be affixed to the student's booklet when the student label is not correct or available.

The image shows the front cover of a 'COMBINED TEST AND ANSWER BOOKLET'. At the top, it says 'COMBINED TEST AND ANSWER BOOKLET'. Below that is the Pennsylvania Keystone Exam logo and 'ESPAÑOL/SPANISH'. It specifies 'Spring 2024 Algebra I' and 'FORM S01'. There is a section for 'STUDENT INFORMATION' with a grid for name, birth date, and PAsecureID. A 'STUDENT PRECODE LABEL' area contains a barcode and the text 'LUGUNDA, JUAN...'. At the bottom, there is a 'NOTE OF CONTACT' section.

**Note:** There is only one form number for the Spanish translation: S01. Make certain that this form number is on Spanish booklet distributed to each student.

Say:

**Cada uno de ustedes debe tener un Folleto en español y uno de inglés del Examen Keystone de [Álgebra I o Biología]. Mira la portada de los dos folletos. En la esquina superior izquierda del folleto en español, está la letra “S” seguida por el número “01”. Asegúrate de que el número “01” aparezca también en la esquina superior izquierda del folleto en inglés. Si estos no están correctos, levanta la mano y te daré un nuevo folleto.**

**Each of you should have [an Algebra I or a Biology] Keystone Exam Spanish Booklet and English Booklet. Look at the front covers of the two booklets. In the upper left-hand corner of the Spanish booklet is the letter “S” followed by the number “01.” Make sure that the number “01” appears in the upper left-hand corner of the English booklet. If these are not correct, raise your hand, and I will give you a new booklet.**

Check to see that each student has the correct booklets. Correct any errors in booklet distribution.

## **B. Reviewing Barcode (District/School or Student Precode) Labels**

Say:

**Mira la portada de tu folleto en español. En la esquina inferior izquierda hay una etiqueta con un código de barras. Verifica que haya una raya de color sobre la etiqueta del código de barras.**

**Look at the front cover of your Spanish booklet. In the lower left-hand corner is a barcode label. Check to see if the barcode label has a colored stripe on it.**

**Si la etiqueta del código de barras NO TIENE una raya de color, asegúrate de que tu nombre completo y fecha de nacimiento estén correctos. Levanta la mano si encuentras un error.**

**If the barcode label DOES NOT have a colored stripe, check to make sure your full legal name and birth date are correct. Raise your hand if you find an error.**

**Si la etiqueta del código de barras TIENE una raya de color, asegúrate que tu nombre completo esté impreso en las casillas de la parte superior de la portada de tu folleto.**

**If the barcode label DOES have a colored stripe, check to make sure that your full legal name is printed in the boxes near the top of the cover page of your booklet.**

**Si la etiqueta del código de barras TIENE una raya de color y tu nombre NO ESTÁ impreso en las casillas, por favor levanta la mano.**

**If the barcode label DOES have a colored stripe and your name IS NOT printed in the boxes, please raise your hand.**

If the label on a student’s Spanish booklet has a colored stripe but the student’s name is not printed in the boxes, contact the SAC immediately to obtain the student’s name, PAsecureID, and birth date as it appears in PIMS. The student may work on the assessment while the SAC obtains the student’s name, PAsecureID, and birth date. Either the SAC or the SAC’s designee must fill in the information for the student.

**Note:** If any barcode label has an error on it, please contact the SAC.

Say:

**En la esquina inferior derecha de tu folleto en español hay una casilla con el título “CODE OF CONDUCT”. Lee en silencio el contenido de esta casilla mientras yo lo leo en voz alta. “He leído o se me ha leído el ‘Código de Conducta para Examinados’. Al marcar este círculo, confirmo que entiendo las instrucciones del código”. Si tú entiendes el *Código de Conducta para los Examinados*, marca ahora el círculo que está dentro de la casilla. Si tienes alguna pregunta acerca del *Código de Conducta para los Examinados*, levanta la mano.**

**In the bottom right-hand corner of your Spanish booklet is a box labeled “CODE OF CONDUCT.” Read the statement inside this box silently as I read it aloud. “I have read, or have had read to me, the ‘Code of Conduct for Test Takers.’ By marking this bubble, I verify that I understand the directions in the code.” If you understand the *Code of Conduct for Test Takers*, darken the circle inside the box now. If you have questions about the *Code of Conduct for Test Takers*, raise your hand.**

Answer student questions until all understand the *Code of Conduct for Test Takers* and darken the circle inside the box. (The *Code of Conduct for Test Takers* is Appendix D of this manual.) When students are ready, continue with the next section of this manual.

### C. Administering the Algebra I or Biology Exam – Module 1 (Spanish and English Scripts)

When all students are ready, say:

**Ahora distribuiré papel borrador y cuadriculado, y las hojas de referencia para usar en este módulo del Examen Keystone de [Álgebra I o Biología].**

**I will now distribute scratch, grid paper, and reference sheets to be used with this module of the [Algebra I or Biology] Keystone Exam.**

Distribute scratch/grid paper and reference sheets. Then say:

**La hoja de referencia está en español y en inglés.**

**The reference sheet is in Spanish and in English.**

**En la hoja de referencia está la *Descripción General de las Pautas de Calificación* la cual proporciona una descripción general de cómo se califican las respuestas para las preguntas razonadas en este examen. Cada pregunta tiene una guía de puntuación específica que utilizan los calificadores profesionales. Puedes consultar la *Descripción General de las Pautas de Calificación* en cualquier momento mientras contestas una pregunta razonada. Puedes usar la hoja de referencia en cualquier momento durante el examen. No escribas en la hoja de referencia porque la puedes usar en el Módulo 2 de este examen.**

**On the reference sheet is the General Description of Scoring Guidelines that gives an overall description of how constructed-response items are scored for this exam. Each item has a specific scoring guide that is used by professional scorers. You may refer to the General Description of Scoring Guidelines at any time while responding to a constructed-response question. You may use the reference sheet at any time while taking this test. Do not write on the reference sheet, as you may use it for Module 2 of the test.**

When all students are ready, say:

**Ahora estamos listos para comenzar [Álgebra I o Biología]—Módulo 1. Sigue cuidadosamente las instrucciones y haz tu mejor esfuerzo. Abre tu folleto en la página 4. En la mitad de la página está el cuadro “ATENCIÓN”. Lee el párrafo del cuadro.**

**Now we are ready to begin [Algebra I or Biology]—Module 1. Carefully follow the directions and give this exam your best effort. Open your booklet to page 4. In the middle of the page is a box labeled “ATTENTION.” Read the paragraph inside this box now.**

Pause for students to read the paragraph. Then say:

**Hay alguna pregunta acerca del párrafo "ATENCIÓN" o de la hoja de referencia?**

**Are there any questions about the "ATTENTION" paragraph or the reference sheet?**

Answer all questions. When all students are ready, say:

**Pasa a la página 5 de tu folleto. Dobra tu folleto de manera que solo veas la página 5.**

**Turn to page 5 in your booklet. Fold your booklet back so that only page 5 is showing.**

Pause while students find the correct page in their booklets. Make sure all students have folded their booklets back so that only page 5 is showing.

## 1. Algebra I

When all students are ready, say:

**Tu folleto contiene preguntas e instrucciones escritas en español. Puedes ver también el folleto con las preguntas y direcciones escritas en inglés.**

**Your booklet contains questions and directions printed in Spanish. You may look at the booklet that has the questions and directions printed in English.**

**Mira las instrucciones en la página 5. Lee las instrucciones en silencio mientras yo las leo en voz alta en español.**

**Look at the directions on page 5. Read the directions silently as I read them aloud in Spanish.**

**En las siguientes páginas de este folleto están las preguntas del Examen Keystone de Álgebra I para el Módulo 1.**

**On the following pages of this booklet are the Keystone Algebra I Exam questions for Module 1.**

**Puedes usar una calculadora en este módulo. Al hacer operaciones con  $\pi$  (pi), puedes usar ya sea  $\pi$  en la calculadora o el número 3.14 como una aproximación de  $\pi$ .**

**You may use a calculator on this module. When performing operations with  $\pi$  (pi), you may use either calculator  $\pi$  or the number 3.14 as an approximation of  $\pi$ .**

**¿Hay alguna pregunta?**

**Are there any questions?**

Answer all questions. When all students are ready, say:

**Continúa leyendo las instrucciones en la página 5 en silencio mientras yo las leo en voz alta en español.**

**Continue to read the directions on page 5 silently as I read them aloud in Spanish.**

**Hay dos tipos de preguntas en cada módulo.**

**There are two types of questions in each module.**

**Preguntas de Opción Múltiple**

**Multiple-Choice Questions**

**Estas preguntas te piden que selecciones una respuesta entre cuatro opciones.**

**These questions will ask you to select an answer from among four choices.**

Continue speaking:

- *Primero lee la pregunta y resuelve el problema en papel borrador. Luego elige la respuesta correcta.*
- *Solo una de las respuestas que se proporcionan es correcta.*
- *Si tu respuesta no está entre las opciones, vuelve a revisar tu trabajo por si hay errores.*
- *Registra tu respuesta en el folleto de Álgebra I.*
- *No elimines respuestas tachando los círculos.*
- *Borra cualquier marca en los círculos que esté fuera de lugar.*
- *First read the question and solve the problem on scratch paper. Then choose the correct answer.*
- *Only one of the answers provided is correct.*
- *If none of the choices matches your answer, go back and check your work for possible errors.*
- *Record your answer in the Algebra I booklet.*
- *Do not eliminate answers by crossing out bubbles.*
- *Erase any stray marks in the bubbles.*

**¿Hay alguna pregunta?**

**Are there any questions?**

Answer all questions. When all students are ready, say:

**Continúa leyendo las instrucciones en la página 5 en silencio mientras yo las leo en voz alta en español.**

**Continue to read the directions on page 5 silently as I read them aloud in Spanish.**

Say:

#### ***Preguntas de Respuesta Razonada***

#### ***Constructed-Response Questions***

***Estas preguntas requieren que escribas tu respuesta.***

***These questions will require you to write your response.***

- ***Estas preguntas tienen más de una parte.***
- ***Lee las preguntas cuidadosamente y responde exactamente lo que se te pregunta. Solo recibirás puntos por contestar lo que se ha pedido. No recibirás puntos por el trabajo que no se te pidió en las preguntas.***
- ***No puedes obtener el puntaje más alto para una pregunta de respuesta razonada si no terminas todas las tareas de la pregunta. Por ejemplo,***
  - o ***si la pregunta pide que muestres tu trabajo o expliques tu razonamiento, asegúrate de mostrar tu trabajo o explicar tu razonamiento en el espacio proporcionado.***
  - o ***si la pregunta pide que expliques, asegúrate de usar palabras para explicar tu razonamiento en el espacio proporcionado.***
- ***These questions have more than one part.***
- ***Read the items carefully and respond to exactly what is being asked. You will only be given credit by responding to what is requested; you will not be given credit for work that is not requested in the questions.***
- ***You cannot receive the highest score for a constructed-response question without completing all the tasks in the question. For example,***
  - o ***if the question asks you to show your work or explain your reasoning, be sure to show your work or explain your reasoning in the space provided.***
  - o ***if the question asks you to explain, be sure to use words to explain your reasoning in the space provided.***

Continue speaking:

- *Todas las respuestas deben escribirse en el lugar apropiado en este folleto de Álgebra I. Algunas respuestas requieren graficar, trazar, rotular, dibujar o sombrear. Si usas papel borrador para escribir tus apuntes, asegúrate de transferir tu respuesta final a este folleto de Álgebra I.*
- *All responses must be written in the appropriate location in the Algebra I booklet. Some answers may require graphing, plotting, labeling, drawing, or shading. If you use scratch paper to write your draft, be sure to transfer your final response to the Algebra I booklet.*

(Continue to “3. Both Exams.”)

## 2. Biology

When all students are ready, say:

**Tu folleto contiene preguntas e instrucciones escritas en español. Puedes ver también el folleto con las preguntas y direcciones escritas en inglés.**

**Mira las instrucciones en la página 5. Lee las instrucciones en silencio mientras yo las leo en voz alta en español.**

**En las páginas siguientes de este folleto están las preguntas del Examen Keystone de Biología para el Módulo 1.**

**Hay dos tipos de preguntas en este módulo.**

### **Preguntas de Opción Múltiple**

**Estas preguntas te pedirán que selecciones una respuesta entre cuatro opciones.**

- **Lee cada pregunta y elige la respuesta correcta.**
- **Solo una de las respuestas que se proporcionan es correcta.**
- **Registra tu respuesta en el folleto de Biología.**
- **No elimines respuestas tachando los círculos.**
- **Borra cualquier marca en los círculos que esté fuera de lugar.**

**¿Hay alguna pregunta?**

**Your booklet contains questions and directions printed in Spanish. You may look at the booklet that has the questions and directions printed in English.**

**Look at the directions on page 5. Read the directions silently as I read them aloud in Spanish.**

**On the following pages of this booklet are the Keystone Biology Exam questions for Module 1.**

**There are two types of questions in this module.**

### **Multiple-Choice Questions**

**These questions will ask you to select an answer from among four choices.**

- **Read each question, and choose the correct answer.**
- **Only one of the answers provided is correct.**
- **Record your answer in the Biology booklet.**
- **Do not eliminate answers by crossing out bubbles.**
- **Erase any stray marks in the bubbles.**

**Are there any questions?**



Answer all questions. When all students are ready, say:

**Continúa leyendo las instrucciones en la página 5 en silencio mientras yo las leo en voz alta en español.**

#### ***Preguntas de Respuesta Razonada***

***Estas preguntas requerirán que escribas tu respuesta.***

- ***Estas preguntas tienen más de una parte.***
- ***Lee las preguntas cuidadosamente y responde exactamente a lo que se está preguntando. Solo recibirás puntos al contestar lo que se ha pedido; no recibirás puntos por el trabajo que no se ha pedido en las preguntas.***
- ***No puedes recibir el puntaje más alto para una pregunta de respuesta razonada sin completar todas las tareas de la pregunta.***
- ***Todas las respuestas deben escribirse en el lugar apropiado en el folleto de respuestas de Biología. Algunas respuestas pueden requerir explicar, analizar, describir o comparar. Si usas papel borrador para escribir tus apuntes, asegúrate de transferir tu respuesta final al folleto de Biología.***

**¿Hay alguna pregunta?**

Answer all questions. When all students are ready, say:

**Continúa leyendo las instrucciones en la página 5 en silencio mientras yo las leo en voz alta en español.**

***Además, un módulo también puede incluir escenarios. Un escenario contiene texto, gráficas, cuadros y/o tablas para describir un concepto de biología, un experimento u otra investigación científica. Puedes usar la información contenida en un escenario para responder a ciertas preguntas del examen. Antes de responder a cualquier pregunta de escenario, asegúrate de estudiar el escenario completo y de seguir las instrucciones para el escenario. Puedes referirte nuevamente al escenario en cualquier momento cuando respondas a las preguntas de escenario.***

(Continue to "3. Both Exams.")

**Continue to read the directions on page 5 silently as I read them aloud in Spanish.**

#### ***Constructed-Response Questions***

***These questions will require you to write your response.***

- ***These questions have more than one part.***
- ***Read the items carefully and respond to exactly what is being asked. You will only be given credit by responding to what is requested; you will not be given credit for work that is not requested in the questions.***
- ***You cannot receive the highest score for a constructed-response question without completing all the tasks in the question.***
- ***All responses must be written in the appropriate location in the Biology booklet. Some answers may require explaining, analyzing, describing, or comparing. If you use scratch paper to write your draft, be sure to transfer your final response to the Biology booklet.***

**Are there any questions?**

**Continue to read the directions on page 5 silently as I read them aloud in Spanish.**

***In addition, a module may also include scenarios. A scenario contains text, graphics, charts, and/or tables describing a biological concept, an experiment, or other scientific research. You can use the information contained in a scenario to answer certain exam questions. Before responding to any scenario questions, be sure to study the entire scenario and follow the directions for the scenario. You may refer back to the scenario at any time when answering the scenario questions.***

### 3. Both Exams

Say:

**¿Hay alguna pregunta?**

Answer all questions. When all students are ready, say:

**Continúa leyendo las instrucciones en la página 5 en silencio mientras yo las leo en voz alta en español.**

***Si terminas antes de tiempo, puedes revisar tu trabajo en el Módulo 1 solamente.***

- ***No te adelantes a las preguntas en el Módulo 2 de tus materiales del examen.***
- ***Después de haber revisado tu trabajo, cierra tus materiales del examen.***

***Puedes consultar esta página en cualquier momento durante esta parte del examen.***

**¿Hay alguna pregunta?**

Answer all questions. When all students are ready, say:

**Ahora pasa a la Descripción General de las Pautas de Calificación en tu hoja de referencia.**

Pause while students turn to the *General Description of Scoring Guidelines*. When all students are ready, say:

**En la hoja de referencia está la *Descripción General de las Pautas de Calificación* la cual proporciona una descripción general de cómo se califican las preguntas de respuesta razonada del examen de [Álgebra I o Biología]. Cada pregunta tiene una guía de puntuación específica que utilizan los calificadores profesionales. Puedes consultar la *Descripción General de las Pautas de Calificación* en cualquier momento mientras contestas una pregunta de respuesta razonada de [Álgebra I o Biología].**

**¿Hay alguna pregunta?**

Answer all questions. When all students are ready, say:

**Cuando escribas tu respuesta a las preguntas de respuesta razonada, debes escribir en las páginas del folleto de español. Puedes ver el examen en inglés en cualquier momento. Todas las respuestas deben ir en el folleto de español que tiene tu nombre en la portada. Puedes escribir tu respuesta en español o en inglés, o en una combinación de español e inglés. ¿Hay alguna pregunta?**

**Are there any questions?**

**Continue to read the directions on page 5 silently as I read them aloud in Spanish.**

***If you finish early, you may check your work in Module 1 only.***

- ***Do not look ahead at the questions in Module 2 of your exam materials.***
- ***After you have checked your work, close your exam materials.***

***You may refer to this page at any time during this portion of the exam.***

**Are there any questions?**

**Now turn to the General Description of Scoring Guidelines on your reference sheet.**

**On your reference sheet is the *General Description of Scoring Guidelines* that gives an overall description of how constructed-response items are scored for the [Algebra I or Biology] exam. Each item has a specific scoring guide that is used by professional scorers. You may refer to the *General Description of Scoring Guidelines* at any time while responding to a constructed-response question for [Algebra I or Biology].**

**Are there any questions?**

**When you write your response to constructed-response questions, you need to write on the pages in the Spanish booklet. You may refer to the English booklet at any time. All of your answers need to go in the Spanish booklet that has the label on the front with your name on it. You may write your response in Spanish or in English, or in a combination of Spanish and English. Are there any questions?**

Answer all questions. When all students are ready, say:

**Ahora estamos listos para comenzar el Módulo 1. Pasa a la página 6 en tu folleto. Mira la flecha “SIGUE” en la parte inferior de cada página. La flecha “SIGUE” indica que aún no has terminado el Módulo 1 y que debes pasar a la siguiente página. Al final del Módulo 1, verás la señal “ALTO” en tu folleto. Asegúrate de seguir respondiendo las preguntas hasta que veas la señal “ALTO” en tu folleto.**

**PARA ÁLGEBRA I SOLAMENTE:**

Recuerda contestar las preguntas 1 a 27 en el Módulo 1.

**We are now ready to start Module 1. Unfold your booklet and turn to page 6. Look at the “GO ON” arrow on the bottom of each page. The “GO ON” arrow indicates that you are not yet finished with Module 1 and you are to continue on to the next page. At the end of Module 1, you will see a “STOP” sign in your booklet. Make sure you continue to respond to questions until you see the “STOP” sign in your booklet.**

**FOR ALGEBRA I ONLY:**

Remember to complete questions 1 through 27 in Module 1.

**PARA BIOLOGÍA SOLAMENTE:**

Recuerda contestar las preguntas 1 a 36 en el Módulo 1.

**FOR BIOLOGY ONLY:**

Remember to complete questions 1 through 36 in Module 1.

**Marca solo una respuesta correcta para cada pregunta de opción múltiple y contesta completamente cada pregunta de respuesta razonada en la sección del Módulo 1 de tu folleto. Si terminas el Módulo 1 antes de que termine la sesión de prueba, puedes revisar tu trabajo SOLO en las preguntas del Módulo 1. Asegúrate de borrar completamente lo que hayas cambiado de una respuesta y las marcas sueltas en la sección del Módulo 1 de tu folleto. Luego cierra tu folleto para que yo sepa que ya terminaste. Recogeré tus materiales de prueba cuando termines. Puedes permanecer sentado en silencio, leer para entretenerte, o leer materiales no relacionados con el contenido hasta que el resto de la clase termine el Módulo 1. ¿Hay alguna pregunta?**

**Mark only one correct answer for each multiple-choice question and completely answer each open-ended question in the Module 1 section of your booklet. If you complete Module 1 before the testing session is over, you may check your work ONLY for questions in Module 1. Make sure that you have completely erased wherever you have changed an answer or made a stray mark in the Module 1 section of your booklet. Then close your booklet so I will know you have finished. I will collect your exam materials when you finish. You may sit quietly, read for pleasure, or read non-content-related materials until the rest of the class completes Module 1. Are there any questions?**

Answer all questions. When all students are ready, say:

**Puedes comenzar.**

**You may begin.**

**Note:** Students who finish early may sit quietly, read for pleasure, or read non-content related materials until all students have finished. Reading for pleasure includes magazines along with fiction text, such as novels, short stories, poetry, etc. Reading anything that may include information related to the content area being assessed is not allowed. Written work/drawing/coloring of any kind is prohibited to ensure students are not recording secure test content.

While students are taking the exam, be available to repeat test directions and/or direct students to the correct section of the test. TAs may encourage the group of students without providing any individual or group help that might suggest the correct answer to a question. Do not communicate to a student that the student should “check” an answer or that the student has answered an item incorrectly. You may, however, provide clarification of exam directions to the group of students. The exam directions are in Appendix C of this manual. They may be repeated to the group of students as needed during the administration.

**FOR ALGEBRA I ONLY:** The testing time for this module is estimated to be 75 minutes, but the actual administration time may vary.

**FOR BIOLOGY ONLY:** The testing time for this module is estimated to be 72 minutes, but the actual administration time may vary.

An incorrect answer is scored the same as an unanswered item. Collect exam materials, reference sheets, scratch/grid paper and any other paper on which students have written when students are finished testing rather than keeping booklets closed on the students' desks. TAs should ask the students if they have completed all of the items listed for this module. The TAs should ask the question as completed materials are collected from or returned by individual students. End the session when all students have completed the module or you are at the end of the scheduled time. Since each student is to be provided sufficient time to finish the exam, additional time may be allowed on an individual basis if one or more students are continuing to make reasonable progress on the exam. For more information about extended exam time, see *Part II: General Assessment Information* in this manual. When you have confirmed that approximately five minutes remain in the testing time for the group and not all students have finished, say:

**Esta sesión terminará en cinco minutos aproximadamente. Asegúrate de haber borrado completamente lo que hayas cambiado de una respuesta y las marcas sueltas en la sección del Módulo 1 de tu folleto. Si necesitas más tiempo para terminar esta sección, levanta la mano y te darán más tiempo y más indicaciones.**

**This session will end in about five minutes. Make sure that you have completely erased wherever you have changed an answer or made a stray mark in the Module 1 section of your booklet. If you need additional time to complete this section, raise your hand, and you will be provided with extra time and given additional directions.**

Allow time for students to erase wherever necessary. When all students are ready, say:

**Cierra tu folleto.**

**Close your booklet.**

**PARA ÁLGEBRA I SOLAMENTE:**

**Usarás los mismos folletos para el Módulo 2, así que asegúrate de que tu nombre esté en la portada de cada folleto. Ahora recogeré tu papel borrador y cuadriculado, cualquier otro papel en que hayas escrito y la hoja de referencia.**

**FOR ALGEBRA I ONLY:**

**You will use the same booklets for Module 2, so make sure your name is on the front cover of each booklet. I will now collect your scratch and grid paper, any other paper on which you have written, and the reference sheet.**

**PARA BIOLOGÍA SOLAMENTE:**

**Usarás los mismos folletos para el Módulo 2, así que asegúrate de que tu nombre esté en la portada de cada folleto. Ahora recogeré tu papel borrador y cualquier otro papel en que hayas escrito, y la hoja de referencia.**

**FOR BIOLOGY ONLY:**

**You will use the same booklets for Module 2, so make sure your name is on the front cover of each booklet. I will now collect your scratch paper and any other paper on which you have written, and the reference sheet.**

Collect used reference sheets, scratch/grid paper and any other paper on which students have written. Used reference sheets, scratch/grid paper and any other paper on which students have written must be returned to the SAC or the SAC's designee and kept in a secure location until it can be destroyed by the SAC (or the SAC's designee) or DAC (or the DAC's designee). All calculators used during the exam must be cleared of any information entered during this module. **Note:** If students used school-provided calculators, also collect the calculators. If the calculators have not been cleared, please clear the calculators at this time.

- If you are administering Module 2 later in the same day, say:

**Debido a que vas a tomar el Módulo 2 más tarde el día de hoy, ahora voy a recoger tus folletos. Te los devolverán cuando tomes el Módulo 2.**

**You are going to take Module 2 later today, so I will now collect your booklets. They will be returned to you at that time.**

- If you are administering Module 2 on a different day [*you may specify the day*], say:

**Debido a que vas a tomar el Módulo 2 [*otro día or say the name of the day*], ahora voy a recoger tus folletos. Te los devolverán cuando tomes el Módulo 2.**

**You are going to take Module 2 on [*a different day or say the name of the day*], so I will now collect your booklets. Your booklets will be returned to you at that time.**

Collect the booklets in a systematic fashion, making sure that students' names are on their booklets.

Return all secure materials (booklets, reference sheets, used scratch/grid paper, and any other paper on which the students may have written immediately to the SAC or the SAC's designee for secure storage. **Note:** Do NOT review student responses to test questions for completeness or accuracy. Do NOT review booklets for stray marks. Do NOT place scratch/grid paper inside the booklets.

**A. Administering the Algebra I or Biology Exam – Module 2 (Spanish and English Scripts)**

Make sure all students have two sharpened No. 2 pencils with good erasers. Students are not to have in their possession a cell phone, camera, smartphone, smartwatch, earbuds, or other unapproved electronic device. **Collect all unapproved electronic devices prior to distributing any exam materials.** Distribute booklets to students, making certain each student has the correct booklets.

Say:

**Asegúrate de que tu nombre esté en la portada de tu folleto en español.**

**Check to make sure that your name is on the front cover of the Spanish booklet.**

**1. Algebra I**

When all students are ready, say:

**Ahora distribuiré papel borrador y cuadriculado y la hoja de referencia para usar en este módulo del Examen Keystone de Álgebra I. La hoja de referencia está en español y en inglés.**

**I will now distribute scratch and grid paper and the reference sheet to be used with this module of the Algebra I Keystone Exam. The reference sheet is in Spanish and in English.**

Distribute scratch/grid paper and the reference sheet, making sure that all scratch/grid paper is blank and that the reference sheets have no additional writing. When all students are ready, say:

**Puedes usar la hoja de referencia en cualquier momento mientras tomas la prueba. No escribas en la hoja de referencia. Ahora estamos listos para comenzar Álgebra I—Módulo 2. Sigue las instrucciones cuidadosamente y pon tu mayor esfuerzo en este examen. Abre tu folleto en la página 4. En esta página hay un cuadro que dice “ATENCIÓN”. Lee el párrafo del cuadro.**

**You may use the reference sheet at any time while taking this test. Do not write on the reference sheet. Now we are ready to begin Algebra I—Module 2. Carefully follow the directions and give this exam your best effort. Open your booklet to page 4. In the middle of the page is a box labeled “ATTENTION.” Read the paragraph inside this box now.**

Pause for students to read the paragraph. Then say:

**¿Hay alguna pregunta sobre este párrafo o la hoja de referencia?**

**Are there any questions about this paragraph or the reference sheet?**

Answer all questions. When all students are ready, say:

**Pasa a la página 29 de tu folleto. Dobla tu folleto de manera que solo veas la página 29.**

**Turn to page 29 in your test booklet. Fold your test booklet back so that only page 29 is showing.**

Pause while students find the correct page in their test booklets. Make sure all students have folded their test booklets back so that only page 29 is showing. When all students are ready, say:

**Tu folleto contiene preguntas e instrucciones escritas en español. Puedes ver también el folleto con las preguntas y direcciones escritas en inglés.**

**Your booklet contains questions and directions printed in Spanish. You may look at the booklet that has the questions and directions printed in English.**

**Mira las instrucciones en la página 29. Lee las instrucciones en silencio mientras yo las leo en voz alta en español.**

**Look at the directions on page 29. Read the directions silently as I read them aloud in Spanish.**

Continue speaking:

**En las siguientes páginas de este folleto están las preguntas del Examen Keystone de Álgebra I para el Módulo 2.**

**Puedes usar una calculadora en este módulo. Al hacer operaciones con  $\pi$  (pi), puedes usar ya sea  $\pi$  en la calculadora o el número 3.14 como una aproximación de  $\pi$ .**

**¿Hay alguna pregunta?**

Answer all questions. When all students are ready, say:

**Continúa leyendo las instrucciones en la página 29 en silencio mientras yo las leo en voz alta en español.**

**Hay dos tipos de preguntas en cada módulo.**

**Preguntas de Opción Múltiple**

**Estas preguntas te piden que selecciones una respuesta entre cuatro opciones.**

- **Primero lee la pregunta y resuelve el problema en papel borrador. Luego elige la respuesta correcta.**
- **Solo una de las respuestas que se proporcionan es correcta.**
- **Si tu respuesta no está entre las opciones, vuelve a revisar tu trabajo por si hay errores.**
- **Registra tu respuesta en este folleto de Álgebra I.**
- **No elimines respuestas tachando los círculos.**
- **Borra cualquier marca en los círculos que esté fuera de lugar.**

**¿Hay alguna pregunta?**

Answer all questions. When all students are ready, say:

**Continúa leyendo las instrucciones en la página 29 en silencio mientras yo las leo en voz alta en español.**

**On the following pages of this test booklet are the Keystone Algebra I Exam questions for Module 2.**

**You may use a calculator on this module. When performing operations with  $\pi$  (pi), you may use either calculator  $\pi$  or the number 3.14 as an approximation of  $\pi$ .**

**Are there any questions?**

**Continue to read the directions on page 29 silently as I read them aloud in Spanish.**

**There are two types of questions in each module.**

**Multiple-Choice Questions**

**These questions will ask you to select an answer from among four choices.**

- **First read the question and solve the problem on scratch paper. Then choose the correct answer.**
- **Only one of the answers provided is correct.**
- **If none of the choices matches your answer, go back and check your work for possible errors.**
- **Record your answer in the Algebra I Spanish booklet.**
- **Do not eliminate answers by crossing out bubbles.**
- **Erase any stray marks in the bubbles.**

**Are there any questions?**

**Continue to read the directions on page 29 silently as I read them aloud in Spanish.**

Continue speaking:

### ***Preguntas de Respuesta Razonada***

***Estas preguntas requieren que escribas tu respuesta.***

- ***Estas preguntas tienen más de una parte.***
- ***Lee las preguntas cuidadosamente y responde exactamente lo que se te pregunta. Solo recibirás puntos por contestar lo que se ha pedido. No recibirás puntos por el trabajo que no se te pidió en las preguntas.***
- ***No puedes obtener el puntaje más alto para una pregunta razonada si no terminas todas las tareas de la pregunta. Por ejemplo,***
  - o ***si la pregunta pide que muestres tu trabajo o expliques tu razonamiento, asegúrate de mostrar tu trabajo o explicar tu razonamiento en el espacio proporcionado.***
  - o ***si la pregunta pide que expliques, asegúrate de usar palabras para explicar tu razonamiento en el espacio proporcionado.***
- ***Todas las respuestas deben escribirse en el lugar apropiado en este folleto de Álgebra I. Algunas respuestas requieren graficar, trazar, rotular, dibujar o sombrear. Si usas papel borrador para escribir tus apuntes, asegúrate de transferir tu respuesta final a este folleto de Álgebra I.***

### ***¿Hay alguna pregunta?***

Answer all questions. When all students are ready, say:

***Continúa leyendo las instrucciones en la página 29 en silencio mientras yo las leo en voz alta en español.***

(Continue to "3. Both Exams.")

### ***Constructed-Response Questions***

***These questions will require you to write your response.***

- ***These questions have more than one part.***
- ***Read the items carefully and respond to exactly what is being asked. You will only be given credit by responding to what is requested; you will not be given credit for work that is not requested in the questions.***
- ***You cannot receive the highest score for a constructed-response question without completing all the tasks in the question. For example,***
  - o ***if the question asks you to show your work or explain your reasoning, be sure to show your work or explain your reasoning in the space provided.***
  - o ***if the question asks you to explain, be sure to use words to explain your reasoning in the space provided.***
- ***All responses must be written in the appropriate location in the Algebra I booklet. Some answers may require graphing, plotting, labeling, drawing, or shading. If you use scratch paper to write your draft, be sure to transfer your final response to the Algebra I booklet.***

### ***Are there any questions?***

***Continue to read the directions on page 29 silently as I read them aloud in Spanish.***



**2. Biology**

When all students are ready, say:

**Ahora distribuiré las hojas de referencia y papel borrador para usar en este módulo del Examen Keystone de Biología.**

**I will now distribute the reference sheets and scratch paper to be used with this module of the Biology Keystone Exam.**

When all students are ready, say:

**Ahora estamos listos para comenzar Biología—Módulo 2. Sigue las instrucciones cuidadosamente y pon tu mayor esfuerzo en este examen. Abre tu folleto en la página 4. En esta página hay un cuadro que dice “ATENCIÓN”. Lee el párrafo del cuadro.**

**Now we are ready to begin Biology—Module 2. Carefully follow the directions and give this exam your best effort. Open your booklet to page 4. In the middle of the page is a box labeled “ATTENTION.” Read the paragraph inside this box now.**

Pause for students to read the paragraph. Then say:

**¿Hay alguna pregunta sobre este párrafo?**

**Are there any questions about this paragraph?**

Answer all questions. When all students are ready, say:

**Pasa a la página 33 de tu folleto. Dobla tu folleto de manera que solo veas la página 33.**

**Turn to page 33 in your booklet. Fold your booklet back so that only page 33 is showing.**

Pause while students find the correct page in their test booklets. Make sure all students have folded their test booklets back so that only page 33 is showing. When all students are ready, say:

**Tu folleto contiene preguntas e instrucciones escritas en español. Puedes ver también el folleto con las preguntas y direcciones escritas en inglés.**

**Your booklet contains questions and directions printed in Spanish. You may look at the booklet that has the questions and directions printed in English.**

**Mira las instrucciones en la página 33. Lee las instrucciones en silencio mientras yo las leo en voz alta en español.**

**Look at the directions on page 33. Read the directions silently as I read them aloud in Spanish.**

***En las páginas siguientes de este folleto están las preguntas del Examen Keystone de Biología para el Módulo 2.***

***On the following pages of this booklet are the Keystone Biology Exam questions for Module 2.***

Say:

***Hay dos tipos de preguntas en este módulo.***

***There are two types of questions in this module.***

Continue speaking:

### ***Preguntas de Opción Múltiple***

***Estas preguntas te pedirán que selecciones una respuesta entre cuatro opciones.***

- ***Lee cada pregunta y elige la respuesta correcta.***
- ***Solo una de las respuestas que se proporcionan es correcta.***
- ***Registra tu respuesta en el folleto de Biología.***
- ***No elimines respuestas tachando los círculos.***
- ***Borra cualquier marca en los círculos que esté fuera de lugar.***

***¿Hay alguna pregunta?***

Answer all questions. When all students are ready, say:

***Continúa leyendo las instrucciones en la página 33 en silencio mientras yo las leo en voz alta en español.***

### ***Preguntas de Respuesta Razonada***

***Estas preguntas requerirán que escribas tu respuesta.***

- ***Estas preguntas tienen más de una parte.***
- ***Lee las preguntas cuidadosamente y responde exactamente a lo que se está preguntando. Solo recibirás puntos al contestar lo que se ha pedido; no recibirás puntos por el trabajo que no se ha pedido en las preguntas.***
- ***No puedes recibir el puntaje más alto para una pregunta de respuesta razonada sin completar todas las tareas de la pregunta.***
- ***Todas las respuestas deben escribirse en el lugar apropiado en el folleto de Biología. Algunas respuestas pueden requerir explicar, analizar, describir o comparar. Si usas papel borrador para escribir tus apuntes, asegúrate de transferir tu respuesta final al folleto de Biología.***

***¿Hay alguna pregunta?***

### ***Multiple-Choice Questions***

***These questions will ask you to select an answer from among four choices.***

- ***Read each question, and choose the correct answer.***
- ***Only one of the answers provided is correct.***
- ***Record your answer in the Biology booklet.***
- ***Do not eliminate answers by crossing out bubbles.***
- ***Erase any stray marks in the bubbles.***

***Are there any questions?***

***Continue to read the directions on page 33 silently as I read them aloud in Spanish.***

### ***Constructed-Response Questions***

***These questions will require you to write your response.***

- ***These questions have more than one part.***
- ***Read the items carefully and respond to exactly what is being asked. You will only be given credit by responding to what is requested; you will not be given credit for work that is not requested in the questions.***
- ***You cannot receive the highest score for a constructed-response question without completing all the tasks in the question.***
- ***All responses must be written in the appropriate location in the Biology booklet. Some answers may require explaining, analyzing, describing, or comparing. If you use scratch paper to write your draft, be sure to transfer your final response to the Biology booklet.***

***Are there any questions?***

Answer all questions. When all students are ready, say:

**Continúa leyendo las instrucciones en la página 33 en silencio mientras yo las leo en voz alta en español.**

*Además, un módulo también puede incluir escenarios. Un escenario contiene texto, gráficas, cuadros y/o tablas para describir un concepto de biología, un experimento u otra investigación científica. Puedes usar la información contenida en un escenario para responder a ciertas preguntas del examen. Antes de responder a cualquier pregunta de escenario, asegúrate de estudiar el escenario completo y de seguir las instrucciones para el escenario. Puedes referirte nuevamente al escenario en cualquier momento cuando respondas a las preguntas de escenario.*

**¿Hay alguna pregunta?**

Answer all questions. When all students are ready, say:

**Continúa leyendo las instrucciones en la página 33 en silencio mientras yo las leo en voz alta en español.**

(Continue to "3. Both Exams.")

**Continue to read the directions on page 33 silently as I read them aloud in Spanish.**

*In addition, a module may also include scenarios. A scenario contains text, graphics, charts, and/or tables describing a biological concept, an experiment, or other scientific research. You can use the information contained in a scenario to answer certain exam questions. Before responding to any scenario questions, be sure to study the entire scenario and follow the directions for the scenario. You may refer back to the scenario at any time when answering the scenario questions.*

**Are there any questions?**

**Continue to read the directions on page 33 silently as I read them aloud in Spanish.**

### 3. Both Exams

Say:

***Si terminas antes de tiempo, puedes revisar tu trabajo en el Módulo 2 solamente.***

- ***No regreses a ver las preguntas en el Módulo 1 de tus materiales del examen.***
- ***Después de haber revisado tu trabajo, cierra tus materiales del examen.***

***Puedes consultar esta página en cualquier momento durante esta parte del examen.***

**¿Hay alguna pregunta?**

Answer all questions. When all students are ready, say:

**Ahora pasa a la Descripción General de las Pautas de Calificación en tu hoja de referencia.**

***If you finish early, you may check your work in Module 2 only.***

- ***Do not look back at the questions in Module 1 of your exam materials.***
- ***After you have checked your work, close your exam materials.***

***You may refer to this page at any time during this portion of the exam.***

**Are there any questions?**

**Now turn to the General Description of Scoring Guidelines on your reference sheet.**

Pause while students turn to the *General Description of Scoring Guidelines*. When all students are ready, say:

**En tu hoja de referencia está la Descripción General de las Pautas de Calificación la cual proporciona una descripción general de cómo se califican las preguntas de respuesta razonada del examen de [Álgebra I o Biología]. Cada pregunta tiene una guía de puntuación específica que utilizan los calificadores profesionales. Puedes consultar la Descripción General de las Pautas de Calificación en cualquier momento mientras contestas una pregunta de respuesta razonada de [Álgebra I o Biología].**

**¿Hay alguna pregunta?**

Answer all questions. When all students are ready, say:

**Cuando escribas tu respuesta a las preguntas de respuesta razonada, debes escribir en las páginas escritas en el folleto de español. Puedes ver el examen en inglés en cualquier momento. Todas las respuestas deben ir en el folleto de español que tiene tu nombre en la portada. Puedes escribir tu respuesta en español o en inglés, o en una combinación de español e inglés. ¿Hay alguna pregunta?**

Answer all questions. When all students are ready, say:

**PARA ÁLGEBRA I SOLAMENTE:**

**Ahora estamos listos para comenzar el Módulo 2. Pasa a la página 30 en tu folleto.**

**PARA BIOLOGÍA SOLAMENTE:**

**Ahora estamos listos para comenzar el Módulo 2. Pasa a la página 34 en tu folleto.**

**Mira la flecha "SIGUE" en la parte inferior de cada página. La flecha "SIGUE" indica que aún no has terminado el Módulo 2 y que debes pasar a la siguiente página. Al final del Módulo 2, verás la señal "ALTO" en tu folleto. Asegúrate de seguir respondiendo las preguntas hasta que veas la señal "ALTO" en tu folleto.**

**PARA ÁLGEBRA I SOLAMENTE:**

**Recuerda contestar las preguntas 1 a 27 en el Módulo 2.**

**On your reference sheet is the *General Description of Scoring Guidelines* that gives an overall description of how constructed-response items are scored for the [Algebra I or Biology] exam. Each item has a specific scoring guide that is used by professional scorers. You may refer to the *General Description of Scoring Guidelines* at any time while responding to a constructed-response question for [Algebra I or Biology].**

**Are there any questions?**

**When you write your response to constructed-response questions, you need to write on the pages in the Spanish booklet. You may refer to the English booklet at any time. All of your answers need to go in the Spanish booklet that has the label on the front with your name on it. You may write your response in Spanish or in English, or in a combination of Spanish and English. Are there any questions?**

**FOR ALGEBRA I ONLY:**

**We are now ready to start Module 2. Unfold your booklet and turn to page 30.**

**FOR BIOLOGY ONLY:**

**We are now ready to start Module 2. Unfold your booklet and turn to page 34.**

**Look at the "GO ON" arrow on the bottom of each page. The "GO ON" arrow indicates that you are not yet finished with Module 2 and you are to continue on to the next page. At the end of Module 2, you will see a "STOP" sign in your booklet. Make sure you continue to respond to questions until you see the "STOP" sign in your booklet.**

**FOR ALGEBRA I ONLY:**

**Remember to complete questions 1 through 27 in Module 2.**

**PARA BIOLOGÍA SOLAMENTE:**

Recuerda contestar las preguntas 1 a 36 en el Módulo 2.

Marca solo una respuesta correcta para cada pregunta de opción múltiple y contesta completamente cada pregunta de respuesta razonada en la sección del Módulo 2 de tu folleto. Si terminas el Módulo 2 antes de que termine la sesión de prueba, puedes revisar tu trabajo **SOLO** en las preguntas del Módulo 2. Asegúrate de borrar completamente lo que hayas cambiado de una respuesta y las marcas sueltas en la sección del Módulo 2 de tu folleto. Luego cierra tu folleto. Recogeré tus materiales de prueba cuando termines. Puedes permanecer sentado en silencio, leer para entretenerte, o leer materiales no relacionados con el contenido hasta que el resto de la clase termine el Módulo 2. ¿Hay alguna pregunta?

**FOR BIOLOGY ONLY:**

Remember to complete questions 1 through 36 in Module 2.

Mark only one correct answer for each multiple choice question and completely answer each open-ended question in the Module 2 section of your booklet. If you complete Module 2 before the testing session is over, you may check your work **ONLY** for questions in Module 2. Make sure that you have completely erased wherever you have changed an answer or made a stray mark in the Module 2 section of your booklet. Then close your booklet. I will collect your exam materials when you finish. You may sit quietly, read for pleasure, or read non-content-related materials until the rest of the class completes Module 2. Are there any questions?

Answer all questions. When all students are ready, say:

**Puedes comenzar.**

**You may begin.**

**Note:** Students who finish early may sit quietly, read for pleasure, or read non-content related materials until all students have finished. Reading for pleasure includes magazines along with fiction text, such as novels, short stories, poetry, etc. Reading anything that may include information related to the content area being assessed is not allowed. Written work/drawing/coloring of any kind is prohibited to ensure students are not recording secure test content.

While students are taking the exam, be available to repeat test directions and/or direct students to the correct section of the test. TAs may encourage the group of students without providing any individual or group help that might suggest the correct answer to a question. Do not communicate to a student that the student should “check” an answer or that the student has answered an item incorrectly. You may, however, provide clarification of exam directions to the group of students. The exam directions are in Appendix C of this manual. They may be repeated to the group of students as needed during the administration.

**FOR ALGEBRA I ONLY:** The testing time for this module is estimated to be 75 minutes, but the actual administration time may vary.

**FOR BIOLOGY ONLY:** The testing time for this module is estimated to be 72 minutes, but the actual administration time may vary.

An incorrect answer is scored the same as an unanswered item. Collect exam materials, reference sheet, scratch/grid paper and any other paper on which students have written when students are finished testing rather than keeping booklets closed on the students' desks. TAs should ask the students if they have completed all of the items listed for this module. The TAs should ask the question as completed materials are collected from or returned by individual students. End the session when all students have completed the module or you are at the end of the scheduled time. Since each student is to be provided sufficient time to finish the exam, additional time may be allowed on an individual basis if one or more students are continuing to make reasonable progress on the exam. For more information about extended exam time, see *Part II: General Assessment Information* in this manual. When you have confirmed that approximately five minutes remain in the testing time for the group and not all students have finished, say:

**Esta sesión terminará en cinco minutos aproximadamente. Asegúrate de haber borrado completamente lo que hayas cambiado de una respuesta y las marcas sueltas en la sección del Módulo 2 de tu folleto. Si necesitas más tiempo para terminar esta sección, levanta la mano y te darán más tiempo y más indicaciones.**

**This session will end in about five minutes. Make sure that you have completely erased wherever you have changed an answer or made a stray mark in the Module 2 section of your booklet. If you need additional time to complete this section, raise your hand, and you will be provided with extra time and given additional directions.**

Allow time for students to erase wherever necessary. When all students are ready, say:

**Cierra tu folleto.**

**Close your booklet.**

**PARA ÁLGEBRA I SOLAMENTE:**

**Ahora recogeré tu folleto. También recogeré tu papel borrador y cuadriculado, cualquier otro papel en que hayas escrito y la hoja de referencia.**

**FOR ALGEBRA I ONLY:**

**I will now collect your booklet. I will also collect your scratch and grid paper, any other paper on which you have written, and the reference sheet.**

**PARA BIOLOGÍA SOLAMENTE:**

**Ahora recogeré tu folleto. También recogeré tu papel borrador y cualquier otro papel en que hayas escrito, y tu hoja de referencia.**

**FOR BIOLOGY ONLY:**

**I will now collect your booklet. I will also collect your scratch paper and any other paper on which you have written, and your reference sheet.**

Collect the booklets in a systematic fashion, making sure that the students' names are on booklets. Collect used reference sheets, scratch/grid paper and any other paper on which students have written. Used scratch/grid paper and any other paper on which students have written must be returned to the SAC or the SAC's designee and kept in a secure location until it can be destroyed by the SAC (or the SAC's designee) or DAC (or the DAC's designee). All calculators used during the exam must be cleared of any information entered during this module. **Note:** If students used school-provided calculators, also collect the calculators. If the calculators have not been cleared, please clear the calculators at this time.

Say:

**Esto concluye el Examen Keystone de [Álgebra I o Biología].**

**This concludes the [Algebra I or Biology] Keystone Exam.**

Return all secure materials (booklets, used scratch/grid paper, and any other paper on which the students may have written [**FOR ALGEBRA I ONLY:** including formula sheets]) immediately to the SAC or the SAC's designee for secure storage. **Note:** Do NOT review student responses to test questions for completeness or accuracy. Do NOT review booklets for stray marks. Do NOT place scratch/grid paper inside the booklets.

Go on to read *Part V: After Exam Administration* found on the next page of this manual.

## A. After Testing Is Complete

1. Make sure all students have turned in their booklets.
2. Make sure student identification information is complete and correct on all students' booklets.
3. If a student booklet has a barcode label with a colored stripe (a District/School Label), make sure that the SAC or the SAC's designee has completed the applicable portions of the front cover and page 2 of the booklet. (See the SAC if you have questions or require further direction.)
4. If a student used any accommodation listed on page 3 of the booklet during the administration of the exam, make sure that applicable portions of page 3 of the booklet are completed by filling in the bubbles. (See the SAC if you have questions or require further direction.)
5. Do **not** check the response pages of the booklet for content, accuracy, completeness, or stray marks.
6. Review and sign the *Keystone Exam Test Security Certification Form (Test Administrator and Proctor)* referenced in Appendix B. Contact the SAC if you need more information.

## B. Return Materials

Test materials must be kept secure. Any unused test materials related to this assessment must be returned to the SAC or the SAC's designee. This manual may be retained by the Test Administrator.

**Return all test materials** to the SAC or the SAC's designee for secure storage. This includes used and unused booklets, used reference sheets, scratch/grid paper, and any other paper on which the students have written. Test materials **must** be returned to the SAC or the SAC's designee immediately at the end of the assessment session.

**Reminder:** All used booklets returned to DRC for processing **must** have a barcode label (District/School, Student Precode, or Do Not Score) affixed to the front cover of the booklet. Do **not** affix a barcode label to any unused booklets.

**Remember:** Every TA and Proctor involved in the administration of this Keystone Exam must sign and date a *Keystone Exam Test Security Certification Form (Test Administrator and Proctor)* upon completing their assigned duties during the testing window. When a TA or Proctor signs and dates the *Keystone Exam Test Security Certification Form (Test Administrator and Proctor)*, that person certifies that all security measures have been followed for this Keystone Exam administration. TAs and Proctors should return the signed and dated *Keystone Exam Test Security Certification Form (Test Administrator and Proctor)* to the SAC or the SAC's designee upon completion of their assigned duties during the testing window.

**If a test security violation is suspected, contact the SAC immediately. If you believe the SAC may have involvement in the violation, immediately contact PDE directly at [ra-edirregularities@pa.gov](mailto:ra-edirregularities@pa.gov) or 844-418-1651. Sending an email with a detailed subject line will provide a faster response from PDE than calling the toll-free number. Please ensure that you utilize only the email account or telephone number provided here.**

**Note:** The SAC has all information on returning exam materials to DRC.

THIS PAGE IS INTENTIONALLY BLANK



# Appendix A:

## Handbook for Secure Test Administration



## Handbook for Secure Test Administration

### Security Statement

State assessments rely on the measurement of individual achievement. Any deviation from procedures meant to ensure test validity and security (e.g., group work, teacher coaching, teaching or release of any test items, use of previously administered Pennsylvania assessments as preparation tools) is strictly prohibited and will be considered a violation of test security. Local Education Agency (LEA)/school personnel with access to the assessment materials must not review, discuss, disseminate, or otherwise reveal the contents to anyone. (This prohibition excludes the *Item and Scoring Samplers* available on the Pennsylvania Department of Education's (PDE's) website.)

Any action by a professional employee or commissioned officer that is willfully designed to divulge test questions, falsify student scores, or compromise the integrity of the state assessment system will be subject to disciplinary action under the Educator Discipline Act, 24 P.S. §§ 2070.1a *et seq*, which may include a private reprimand, a public reprimand, a suspension of the employee's teaching certificate(s), a revocation of the employee's teaching certificate(s), and/or a suspension or prohibition from being employed by a charter school.

### Training and Test Administration Procedures

The purpose of this handbook is to assist in the training of LEA/school personnel to properly and securely administer state assessments. This handbook is also an important and valuable resource in implementing testing successfully from planning and preparing to collecting and returning tests.

### Roles and Responsibilities: Training

The District Assessment Coordinator (DAC) is responsible for completing all of the Pennsylvania State Test Administration Trainings (PSTATs) provided by PDE for the DACs, SACs, and TAs/Proctors. DACs must complete the Data Recognition Corporation (DRC) training on receiving and packaging materials, and any DAC specific training provided by the PDE. The DAC is then responsible for coordinating all training that takes place in the LEA and for determining specifics related to test administration such as a schedule, type of administration (paper and pencil or online) and other LEA-level administrative aspects of the testing. The DAC is responsible for ALL training in the LEA with primary responsibility for the direct training of SACs. In some LEAs the DAC may train the LEA-level staff who handle and/or have access to secure test material.

The SAC receives training from the DAC and must also complete both the PSTAT training for SACs and for TAs/Proctors. The SAC is then responsible to oversee all aspects of test administration in a building, including training Test Administrators (TAs), proctors, and other building level staff.

The TAs/Proctors must complete the PSTAT training for TAs/Proctors. The TAs/Proctors are responsible for administering the assessment and monitoring students during the assessment.

Translators, interpreters, and scribes must complete the PSTAT training for TAs/Proctors and must also complete the training offered by the school/district.

The *Handbook for Assessment Coordinators* provides more information related to training.



## Roles and Responsibilities: Test Administration

The following lists the general roles and responsibilities for DACs, SACs/Principals, TAs/Proctors, and general personnel before, during, and after test administration. The lists are not exhaustive but provide a general overview of the most important responsibilities of each individual in test administration. In some cases the responsibilities may overlap between or among DACs, SACs, and/or TAs/Proctors. In these cases it is the responsibility of the DAC to determine who has the primary responsibility and is accountable for specific duties, especially when duties may be shared.

### A. DISTRICT ASSESSMENT COORDINATOR TEST SECURITY GUIDELINES

General Statement: Administer the assessment using the best practices and with fidelity to the administrative guidelines; keep the assessment materials secure and confidential; prevent any dishonest or fraudulent behavior in the administration and handling of the assessment; and promote a fair and equitable testing environment in order to obtain reliable and valid student scores.

#### Before Test Administration – DAC

Complete the PSTAT trainings for the administration of the assessments annually.

Complete the *Accommodations Guidelines* training annually.

Update DRC INSIGHT portal accounts for LEA and school users.

Review the *Handbook for Assessment Coordinators* (HAC), *Directions for Administration* (DFA), *Accommodations Guidelines*, *Online User Guides* (if online testing) and other test-related documents necessary to conduct training for test administration.

Review the LEA's policy/procedures for home-schooled students.

Review the LEA's policy/procedures for handling cyber-charter schools' requests to test their students.

Develop and maintain the LEA's procedure for parental requests to view tests (opt-outs).

Develop and maintain the LEA's procedure for handling breaks during test administration and keeping test and answer booklets secure.

Develop and maintain the LEA's procedure for handling disruptions during test administration and keeping test and answer booklets secure.

Develop and maintain the LEA's procedure for handling emergencies during test administration.

Develop the LEA's master test schedule (including make-ups) that falls within PDE established test windows for each administration and include it in training. Ensure that the test schedule is developed so that sections are administered in the sequence in which they are printed in the test booklets.

Develop a training agenda and train SACs and other LEA-level staff involved in test administration or the handling of secure material prior to conducting any of their assigned work. (See *Handbook for Assessment Coordinators* for more information).



Ensure that SACs are trained on the test accountability and security information contained in the *Handbook for Assessment Coordinators*.

Ensure that SACs are trained on the *Accommodations Guidelines*.

Ensure that all individuals involved in the handling of assessment materials and/or the administration of the assessment are instructed in test security protocols and procedures.

Ensure that any individual who will administer and/or proctor the assessment completes the online PSTAT annually (each school year).

Ensure that all individuals involved in the handling and/or administration of the assessment receive instruction that all assessment materials, including all assessment booklets and other materials containing secure assessment questions and student responses, are to be kept secure and precisely accounted for in accordance with the procedures specified in the *Handbook for Assessment Coordinators*.

Ensure that SACs receive instruction on the policy regarding all electronic devices (cell phones, smartphones, smartwatches, cameras, etc.).

Ensure that all individuals who assist in the administration of the assessment and all individuals who have access to the secure assessment materials have been made aware that they are not in any manner to alter or cause the alteration of any examinee response, assessment booklet, or papers used by examinees.

Communicate to students, parents, and the community that which the assessment does and does not measure, when and how it will be administered, and how the results will be used. Refer to the *Handbook for Assessment Coordinators* for a sample Parent Letter.

Notify and ensure that all students and parents/guardians have been provided the policy regarding all electronic devices (cell phones, smartphones, smartwatches, cameras, etc.).

Consider having a teacher other than the teacher-of-record administer the assessment to students. If local circumstances do not allow that option, consider assigning a Proctor to be in the classroom with the TA. (In some circumstances LEAs have been directed by PDE not to use the teacher-of-record to administer the assessment to students they instruct in the present school year.)

Inventory secure materials without breaking the shrink wrap (ship-to-district).

Report any items not received.

Distribute tests to SAC(s) (ship-to-district).

### **During Test Administration – DAC**

Monitor testing sites to ensure administration of the assessments in accordance with PDE policies and procedures.

Ensure that sections/modules are started and completed in the same day as per the LEA testing schedule.

Instruct all school staff to minimize distractions, including intercom announcements.



Suspected testing irregularities/security breaches must immediately be reported to the Pennsylvania Department of Education. For the most rapid response, irregularities and/or allegations should be reported to PDE via [ra-edirregularities@pa.gov](mailto:ra-edirregularities@pa.gov). You may also report by phone at 844-418-1651; however, using the telephone may delay the response.

### **After Test Administration – DAC**

Collect tests from SAC(s) (ship-to-district).

Complete the Materials Accountability Form after inventorying, packaging, and returning the materials to the vendor.

NOTE: DACs should not open or look into answer booklets or test booklets.

Record the UPS Tracking Number for each package, noting the assessment(s) for which it was used and the content of each box. Please keep the number(s) for future reference to document the materials returned to DRC.

Sign the *Test Security Certification (District Assessment Coordinator)*. The DAC should sign the *Test Security Certification* at the end of each testing window.

Failure to account for and/or return assessment materials constitutes a breach in security, the consequences of which can be severe, up to and including remuneration should it be determined loss of or misappropriation of materials has compromised the integrity of test items.

## **B. SCHOOL ASSESSMENT COORDINATOR AND/OR BUILDING PRINCIPAL TEST SECURITY GUIDELINES**

General Statement: Maintain the security and integrity of all assessment materials, prevent any dishonest or fraudulent behavior in the administration and handling of the assessment, and promote a fair and equitable testing environment in order to obtain reliable and valid student scores.

### **Before Test Administration – SAC**

Attend the annual training for SACs provided by the DAC.

Complete the PSTAT training for SACs and for TAs/Proctors annually.

Review DFA's, the *Handbook for Assessment Coordinators*, *Accommodations Guidelines*, and *Online User Guides* (if testing online).

Develop a building level master test schedule (including make-ups) that falls within PDE established testing windows for each administration and include it in training. Ensure that the test schedule is developed so that sections are administered in the sequence in which they are printed in the test booklets.

Develop an agenda and train TAs/Proctors and other building level personnel (review the *Handbook for Assessment Coordinators* for more information).

Ensure that all individuals involved in the handling of assessment materials and/or the administration of the assessment receive instruction regarding test security protocols and procedures.

Ensure that all TAs/Proctors receive a copy of the TA/Proctor *Test Security Certification*.



Ensure that all individuals who will administer and/or proctor the assessment complete the Pennsylvania State Test Administration Training (PSTAT). Translators, interpreters, and scribes must complete the PSTAT training for TAs/Proctors and must also complete the training offered by the school/district.

Ensure that all individuals involved in the handling and/or administration of the assessment receive instruction that all assessment materials must remain secure. This includes all assessment booklets and other materials containing secure assessment questions and student responses that must be kept secure and precisely accounted for in accordance with the procedures specified in the *Handbook for Assessment Coordinators*.

Ensure that all TAs/Proctors are instructed on the policy regarding electronic devices (cell phones, smartphones, smartwatches, cameras, etc.).

Ensure that all individuals who assist in the administration of the assessment and all individuals who have access to the secure assessment materials are instructed that they are not in any manner to alter or cause the alteration of any examinee response, assessment booklet, or papers used by examinees.

Create and maintain the PAsecureID list (refer to the *Handbook for Assessment Coordinators* for specific instructions).

Ensure all students are scheduled for the appropriate assessment.

Ensure TAs/Proctors understand that each assessment returned will be linked to the TA who administered the assessment. For paper and pencil assessments, TA initials will be collected on the back page of each answer booklet. For online testing, teacher (TA) names must be included with each online test session created. This will link the TA to the online session prior to test tickets being generated.

Ensure that students testing online have prior experience with the online practice test and tools that model the testing mode (online).

Maintain a contingency plan for breaks and for disruptions during testing.

Ensure monitoring software or spyware is disabled or removed from computers, iPads, and Chromebooks to be used for testing.

Ensure all instructional materials that could aid students in answering test items are covered with opaque material or removed from classrooms and hallways.

Make sure the testing environment is secure and educationally appropriate.

Know the required accommodations and those allowable accommodations for each student with an IEP or 504 Service Plan and/or for each English Learner being assessed and communicate this to the appropriate personnel.

Provide the appropriate testing environment for each student requiring an accommodation.

Inventory the tests received in ship-to-district. If additional materials are needed, notify DRC. In a ship-to-school site the SAC should order additional materials, if needed.

Report any shipping or ordering mistakes immediately to DRC.

Create Test Sessions in the DRC INSIGHT portal (if testing online). Make sure to list the correct TA when creating test sessions in the DRC INSIGHT portal.



Put labels on answer booklets (Do not open test booklets while labeling).

Place a "Testing—Do Not Disturb" sign on doors where testing is occurring.

### **During Test Administration – SAC**

Develop and maintain a procedure for distribution and collection of secure test materials to TAs each day utilizing a sign-out/sign-in process. It is recommended that TAs count the test booklets in the presence of the SAC or the SAC's designee.

Ensure that TAs are following proper testing protocols.

Make sure students are supervised at all times during testing and all breaks. This supervision requirement includes those students who need additional time to complete any test session.

If there is a disruption (e.g., fire alarm, power outage) ensure the safety of students at all times, and take appropriate precautions concerning the security of the test and answer booklets.

Ensure secure processes and procedures for extended time. Do not allow students to move to an extended time location without a TA and do not allow students to carry materials to an extended time session/location.

Make sure that sections/modules are started and completed in the same day.

Minimize distractions, including intercom announcements.

Ensure tests are stored in a locked area with controlled and limited access.

Report suspected testing irregularities/security breaches to the DAC. If the DAC is unavailable for an extended time or has any involvement in the testing irregularity, PDE must be contacted directly. For the most rapid response, irregularities and/or allegations should be reported to PDE via [ra-edirregularities@pa.gov](mailto:ra-edirregularities@pa.gov). You may also report by phone at 844-418-1651; however, using the telephone may delay the response.

### **After Each Testing Session – SAC**

Collect all materials from TAs excluding copies of the DFA.

Account for all student test tickets, test booklets, and answer booklets daily. It is recommended that the SAC or the SAC's designee count the test booklets and/or test tickets in the presence of the TA.

Store testing materials in a locked, secure location.

Destroy scratch/grid paper, rough drafts, online administration test tickets, and any other paper on which students have written.



## After Test Administration – SAC

Inventory and return tests to the DAC (ship-to-district) or follow pack and ship procedures to return tests to DRC (ship-to-school).

NOTE: SACs should not open answer booklets or test booklets or review test items.

In ship-to-school LEAs, SACs should record the UPS Tracking Number for each package, noting the assessment(s) for which it was used and the content of each box. Maintain the number(s) for future reference to document that the materials were returned to DRC.

Failure to account for and/or return assessment materials constitutes a breach in security, the consequences of which can be severe; up to and including remuneration should it be determined loss of or misappropriation of materials has compromised the integrity of test items.

Sign the *Test Security Certification (School Assessment Coordinator and Principal)*. The SAC should sign the *Test Security Certification* at the end of each testing window.

Ensure all TAs, Proctors, Translators, Interpreters, Scribes, and other individuals with access to secure testing materials sign the *Test Security Certification*. If someone cannot or does not sign the *Test Security Certification*, immediately report that fact to the Chief School Administrator to report to the Department of Education. For the most rapid response, allegations should be referred to [ra-edirregularities@pa.gov](mailto:ra-edirregularities@pa.gov) or report by phone at 844-418-1651 (using the telephone report may delay the response).

## C. TEST ADMINISTRATOR/PROCTOR TEST SECURITY GUIDELINES

General Statement: Maintain the security and integrity of all assessment materials, prevent any dishonest or fraudulent behavior in the administration and handling of the assessment, and promote a fair and equitable testing environment in order to obtain reliable and valid student scores.

### Before Test Administration – TA/Proctor

Attend the annual training for TAs/proctors provided by the SAC.

Annually (each school year) complete the PSTAT.

Review the *Directions for Administration Manual* for the test to be administered.

Read and understand the *Test Security Certification*.

Know and understand that each assessment returned will be linked to the TA who administered the assessment. For paper and pencil assessments, TA initials will be collected on the back page of each answer booklet. For online testing, teacher (TA) names must be included with each online test session created. This will link the TA to the online session prior to test tickets being generated.

Remove or cover with opaque materials all classroom instructional materials or any other materials that could aid students in answering test items.

Make sure the testing environment is secure and educationally appropriate.





Review the *Code of Conduct for Test Takers* with students prior to the day of testing and respond to all student questions.

Review the *Calculator Policy* and ensure calculators (other than calculators provided within the online testing engine) meet the requirements of the *Calculator Policy*. Clear the calculator memory. For calculators with exam mode capability, place the calculator in exam mode.

Know and prepare to appropriately implement the required accommodations for each student with an IEP or 504 Service Plan and for each English Learner being assessed in your room.

Review with students the possible local sanctions the district will enforce for student misconduct (e.g., cheating and recording test questions).

### **During Test Administration – TA/Proctor**

Collect cell phones, smartphones, and other unauthorized electronic devices as students enter the testing site.

Ensure students are seated for optimal security and at the assigned workstation (online test).

Appropriately implement required accommodations.

During the administration of the mathematics assessment, collect all used scratch/grid paper and any other paper on which students have written after the non-calculator portion to ensure students have not recorded non-calculator items on scratch/grid paper. Provide new scratch/grid paper to students.

Actively monitor testing. Closely monitor to ensure students do not return to non-calculator questions. These pages are labeled with a bright border for ease in identification. TAs should take positions with the best vantage points and continually move around the testing site to ensure students are adhering to the instructions given and are in the correct session. Ascertain that students are not using inappropriate item elimination strategies or making stray marks in the answer bubbles. TAs/Proctors must not be engaged in off task activities such as working on electronic devices, talking with colleagues, or grading student work.

Make sure students are supervised at all times during testing and all breaks. This supervision requirement includes those students who need additional time to complete any test session.

If there is a disruption (e.g., fire alarm, power outage) ensure the safety of students at all times, and take appropriate precautions concerning the security of the test and answer booklets.

Collect test materials when students are finished testing rather than keeping them closed on the students' desks.

Students who finish early may sit quietly, read for pleasure, or read non-content related materials until all students have finished. Reading for pleasure includes magazines along with fiction text such as novels, short stories, poetry, etc. Reading anything that may include information related to the content area being assessed is not allowed. Written work/drawing/coloring of any kind is prohibited to ensure students are not recording secure test content.

Immediately report suspected testing irregularities/security breaches to the SAC/Building Principal.



### After Each Testing Session – TA/Proctor

Return all scratch/grid paper, rough drafts or any other paper on which students have written to the SAC to be destroyed.

Account for all student test tickets, test booklets, and answer booklets daily and return all secure testing materials to the SAC immediately after the testing session each day. It is recommended that the SAC or the SAC's designee count the test booklets and/or test tickets in the presence of the TA.

Failure to account for and/or return assessment materials constitutes a breach in security, the consequences of which can be severe, up to and including remuneration should it be determined loss of or misappropriation of materials has compromised the integrity of test items.

Clear the memory of calculators and set the calculators in testing or exam mode before and after each testing session.

### After Test Administration – TA/Proctor

Sign the *Test Security Certification (Test Administrator/Proctor)* and return it to the SAC. The TA/Proctor should sign the *Test Security Certification* at the end of each testing window.

## D. GENERAL TEST SECURITY GUIDELINES

The assessments rely on the measurement of individual achievement. Any deviation from assessment procedures is strictly prohibited and will be considered a violation of test security.

School administrators, teachers, and any other education personnel who are involved in the assessment program must maintain the security of all assessment materials at all times.

Because the assessment must remain secure, teachers/TAs should not have assessment materials in their possession at any time other than during the actual assessment administration.

### Before Test Administration

DO NOT:

Teach students a test-taking technique that would require them to bubble more than one response to a test question and then return and erase all but one response.

Review student test booklets except for purposes as stated in the *Directions for Administration Manual* and any of the accommodations guidelines documents. Knowledge or review of test items is not necessary for valid test administration and is prohibited.

Note: Interpreters may have access to test materials three days prior to test administration to prepare for accurate interpretation of the test.

Reveal any part of copyrighted materials to anyone.

Copy or otherwise reproduce any part of copyrighted materials.

Review and/or provide answers to test items to students. This includes using any of the test items for instructional purposes.



Possess unauthorized copies of state tests.

Assist in, direct, aid, counsel, encourage, or fail to report immediately any of the actions prohibited in this document.

## During Test Administration

### DO NOT:

Leave students unattended with testing materials or permit any student to leave the testing site with testing materials for any reason.

Permit students to have unauthorized electronic devices in their possession or accessible to them.

Permit students to look ahead to another section or module of the test before being instructed to do so, or allow students to look back in a test booklet once a test section or module has been completed.

Discuss, disseminate, or otherwise reveal contents of the test to anyone.

Possess secure test materials at any time other than during the actual administration of the test. TAs should be given the secure materials immediately prior to the administration of the test, and the materials must be collected and counted by the SAC immediately after the testing session ends each day.

Coach or provide feedback to students (e.g., answer any questions pertaining to the content of the test, review rough drafts, or give students feedback of any kind including indicating items students may not have answered correctly). This prohibition applies to, but is not limited to, Personal Care Aides (PCA), Therapeutic Support Staff (TSS), or any other one-on-one aide who is assigned to a student.

Define or clarify a word in a test item.

Deviate from any of the read-aloud rules for any portion of the assessments. (The *Pennsylvania Read-Aloud and Scribing Guidelines for Operational Assessments* can be found on the PDE website.)

Read aloud any part of the assessments that will cue the correct answer(s) or provide a hint for the test taker.

Read-aloud the parts of the assessment that are not permitted to be read-aloud.

Return a test booklet to any student after it has been turned in to the TA, unless approval is granted by PDE, or for the reasons noted in the following sentence. Test booklets will be returned to students for makeup sessions for absences and for students who go to another testing site for extended time.

Alter, influence, or interfere with a test response in any way; fill in any unanswered item, or instruct the student to do so.

Assist in, direct, aid, counsel, encourage, or fail to report any of the actions prohibited in this document.

Play music while students are taking the test.



## After Test Administration

### DO NOT:

Discuss, disseminate, or otherwise reveal the contents of the test to anyone.

Keep/save, copy, reproduce, or use any test, test item, specific test content, or examinee responses to any item or any section of a secure test in any manner inconsistent with the instructions provided by and through the Pennsylvania Department of Education. This includes using any of the test items for instructional purposes.

Review student responses in the answer booklet.

Read or review test booklets, answer booklets, or combined test/answer booklets containing the test items.

Alter, influence, or interfere with a test response in any way, fill in any unanswered items, or instruct the student to do so.

Discuss or provide feedback regarding test items.

Copy or reproduce any portion of the secure test materials or prepare/provide answer keys.

Erase or change student answers.

Make false or misleading statements about assessment results, including inappropriate interpretations, inaccurate reports, or unsubstantiated claims.

Erase stray marks or darken bubbles or make any alteration to a student's test.

Assist in, direct, aid, counsel, encourage, or fail to report any of the actions prohibited in this document.

### DO:

Immediately report suspected testing irregularities/security breaches. TAs/Proctors should report to the SAC/Building Principal; SACs should report directly to the DAC. In either case if the appropriate coordinator, whether SAC or DAC, is unavailable for an extended time or has any involvement in the testing irregularity, contact PDE directly. For the most rapid response, irregularities and/or allegations should be reported to PDE at [ra-edirregularities@pa.gov](mailto:ra-edirregularities@pa.gov). You may also report by phone at 844-418-1651; however, using the telephone may delay the response.

Sign the *Test Security Certification (General)*. Those involved with testing should sign the *Test Security Certification* at the end of each testing window.

# **Appendix B:**

## **Keystone Exam Test Security Certification Form (Test Administrator and Proctor)**



## Spring 2024 Keystone Exam Test Security Certification Form

(Test Administrator and Proctor)

District: \_\_\_\_\_

School: \_\_\_\_\_

AUN: \_\_\_\_\_

Maintaining the security and integrity of all assessment materials, preventing any dishonest or fraudulent behavior in the administration and handling of the assessment, and promoting a fair and equitable testing environment are essential in order to obtain reliable and valid student scores. In that regard, I certify the following:

Prior to the administration of the assessment, I completed the Pennsylvania State Test Administration Training, and I understand that the assessment materials are secure, confidential, and proprietary documents owned by the Pennsylvania Department of Education.

I have not reviewed, discussed, disseminated, described, or otherwise revealed the contents of the assessment to anyone. I have not removed any assessment materials from the school building unless I was specifically authorized to administer the assessment to a student on homebound instruction. I have not kept, copied, reproduced, released, or used any assessment, assessment question, specific assessment content, or examinee response to any item or any section of the secure assessment in any manner that is inconsistent with the instructions provided by or through the Pennsylvania Department of Education. I have not provided any examinee with an answer to an assessment question or in any way influenced an examinee's response to any assessment question. I have not in any manner altered or caused the alteration of any examinee response, assessment booklet, or papers used by examinees.

I understand that any breach in assessment security could result in the invalidation of assessment results, professional discipline, and/or criminal prosecution.

I understand that false statements herein are made subject to the penalties of 18 Pa.C.S. § 4904.

\_\_\_\_\_  
Administrator/Proctor Name

\_\_\_\_\_  
Administrator/Proctor Signature

\_\_\_\_\_  
Date of Signature

# **Appendix C:**

## **Algebra I and Biology Exam Directions— Spanish Translation**

## ALGEBRA I EXAM DIRECTIONS

Below is the Spanish translation of the exam directions available to students in their booklets. These directions may be used to help students navigate through the exam.

En las siguientes páginas de este folleto están las preguntas del Examen Keystone de Álgebra I para el Módulo 1 [o el Módulo 2].

Puedes usar una calculadora en este módulo. Al hacer operaciones con  $\pi$  (pi), puedes usar ya sea  $\pi$  en la calculadora o el número 3.14 como una aproximación de  $\pi$ .

Hay dos tipos de preguntas en cada módulo.

### Preguntas de Opción Múltiple

Estas preguntas te piden que selecciones una respuesta entre cuatro opciones.

- Primero lee la pregunta y resuelve el problema en papel borrador. Luego elige la respuesta correcta.
- Solo una de las respuestas que se proporcionan es correcta.
- Si tu respuesta no está entre las opciones, vuelve a revisar tu trabajo por si hay errores.
- Registra tu respuesta en el folleto de Álgebra I.
- No elimines respuestas tachando los círculos.
- Borra cualquier marca en los círculos que esté fuera de lugar.

### Preguntas de Respuesta Razonada

Estas preguntas requieren que escribas tu respuesta.

- Estas preguntas tienen más de una parte.
- Lee las preguntas cuidadosamente y responde exactamente lo que se te pregunta. Solo recibirás puntos por contestar lo que se ha pedido. No recibirás puntos por el trabajo que no se te pidió en las preguntas.
- No puedes obtener el puntaje más alto para una pregunta razonada si no terminas todas las tareas de la pregunta. Por ejemplo,
  - o si la pregunta pide que muestres tu trabajo o expliques tu razonamiento, asegúrate de mostrar tu trabajo o explicar tu razonamiento en el espacio proporcionado.
  - o si la pregunta pide que expliques, asegúrate de usar palabras para explicar tu razonamiento en el espacio proporcionado.
- Todas las respuestas deben escribirse en el lugar apropiado en este folleto de Álgebra I. Algunas respuestas requieren graficar, trazar, rotular, dibujar o sombrear. Si usas papel borrador para escribir tus apuntes, asegúrate de transferir tu respuesta final a este folleto de Álgebra I.

**Si terminas antes de tiempo, puedes revisar tu trabajo en el Módulo 1 [o Módulo 2] solamente.**

- No te adelantes a las preguntas en el Módulo 2 [ni regreses a ver las preguntas en el Módulo 1] de tus materiales del examen.
- Después de haber revisado tu trabajo, cierra tus materiales del examen.

Puedes consultar esta página en cualquier momento durante esta parte del examen.



## ALGEBRA I EXAM DIRECTIONS

Below are the exam directions available to students in their booklets. These directions may be used to help students navigate through the exam.

On the following pages of this booklet are the Keystone Algebra I Exam questions for Module 1 [or Module 2].

You may use a calculator on this module. When performing operations with  $\pi$  (pi), you may use either calculator  $\pi$  or the number 3.14 as an approximation of  $\pi$ .

There are two types of questions in each module.

### Multiple-Choice Questions

These questions will ask you to select an answer from among four choices.

- First read the question and solve the problem on scratch paper. Then choose the correct answer.
- Only one of the answers provided is correct.
- If none of the choices matches your answer, go back and check your work for possible errors.
- Record your answer in the Algebra I booklet.
- Do not eliminate answers by crossing out bubbles.
- Erase any stray marks in the bubbles.

### Constructed-Response Questions

These questions will require you to write your response.

- These questions have more than one part.
- Read the items carefully and respond to exactly what is being asked. You will only be given credit by responding to what is requested; you will not be given credit for work that is not requested in the questions.
- You cannot receive the highest score for a constructed-response question without completing all the tasks in the question. For example,
  - if the question asks you to show your work or explain your reasoning, be sure to show your work or explain your reasoning in the space provided.
  - if the question asks you to explain, be sure to use words to explain your reasoning in the space provided.
- All responses must be written in the appropriate location in the Algebra I booklet. Some answers may require graphing, plotting, labeling, drawing, or shading. If you use scratch paper to write your draft, be sure to transfer your final response to the Algebra I booklet.

### If you finish early, you may check your work in Module 1 [or Module 2] only.

- Do not look ahead at the questions in Module 2 [or back at the questions in Module 1] of your exam materials.
- After you have checked your work, close your exam materials.

You may refer to this page at any time during this portion of the exam.

## BIOLOGY EXAM DIRECTIONS

Below is the Spanish translation of the exam directions available to students in their booklets. These directions may be used to help students navigate through the exam.

En las páginas siguientes de este folleto de prueba están las preguntas del Examen Keystone de Biología para el Módulo 1 [o el Módulo 2].

Hay dos tipos de preguntas en este módulo.

### Preguntas de Opción Múltiple

Estas preguntas te pedirán que selecciones una respuesta entre cuatro opciones.

- Lee cada pregunta y elige la respuesta correcta.
- Solo una de las respuestas que se proporcionan es correcta.
- Registra tu respuesta en el folleto de Biología.
- No elimines respuestas tachando los círculos.
- Borra cualquier marca en los círculos que esté fuera de lugar.

### Preguntas de Respuesta Razonada

Estas preguntas requerirán que escribas tu respuesta.

- Estas preguntas tienen más de una parte.
- Lee las preguntas cuidadosamente y responde exactamente a lo que se está preguntando. Solo recibirás puntos al contestar lo que se ha pedido; no recibirás puntos por el trabajo que no se ha pedido en las preguntas.
- No puedes recibir el puntaje más alto para una pregunta de respuesta razonada sin completar todas las tareas de la pregunta.
- Todas las respuestas deben escribirse en el lugar apropiado en el folleto de Biología. Algunas respuestas pueden requerir explicar, analizar, describir o comparar. Si usas papel borrador para escribir tus apuntes, asegúrate de transferir tu respuesta final al folleto de respuestas de Biología.

Además, un módulo también puede incluir escenarios. Un escenario contiene texto, gráficas, cuadros y/o tablas para describir un concepto de biología, un experimento u otra investigación científica. Puedes usar la información contenida en un escenario para responder a ciertas preguntas del examen. Antes de responder a cualquier pregunta de escenario, asegúrate de estudiar el escenario completo y de seguir las instrucciones para el escenario. Puedes referirte nuevamente al escenario en cualquier momento cuando respondas a las preguntas de escenario.

**Si terminas antes de tiempo, puedes revisar tu trabajo en el Módulo 1 [o Módulo 2] solamente.**

- No te adelantes a las preguntas en el Módulo 2 [ni regreses a ver las preguntas en el Módulo 1] de tus materiales del examen.
- Después de haber revisado tu trabajo, cierra tus materiales del examen.

Puedes consultar esta página en cualquier momento durante esta parte del examen.

## BIOLOGY EXAM DIRECTIONS

Below are the exam directions available to students in their booklets. These directions may be used to help students navigate through the exam.

On the following pages of this booklet are the Keystone Biology Exam questions for Module 1 [or Module 2].

There are two types of questions in this module.

### Multiple-Choice Questions

These questions will ask you to select an answer from among four choices.

- Read each question, and choose the correct answer.
- Only one of the answers provided is correct.
- Record your answer in the Biology booklet.
- Do not eliminate answers by crossing out bubbles.
- Erase any stray marks in the bubbles.

### Constructed-Response Questions

These questions will require you to write your response.

- These questions have more than one part.
- Read the items carefully and respond to exactly what is being asked. You will only be given credit by responding to what is requested; you will not be given credit for work that is not requested in the questions.
- You cannot receive the highest score for a constructed-response question without completing all the tasks in the question.
- All responses must be written in the appropriate location in the Biology booklet. Some answers may require explaining, analyzing, describing, or comparing. If you use scratch paper to write your draft, be sure to transfer your final response to the Biology booklet.

In addition, a module may also include scenarios. A scenario contains text, graphics, charts, and/or tables describing a biological concept, an experiment, or other scientific research. You can use the information contained in a scenario to answer certain exam questions. Before responding to any scenario questions, be sure to study the entire scenario and follow the directions for the scenario. You may refer back to the scenario at any time when answering the scenario questions.

**If you finish early, you may check your work in Module 1 [or Module 2] only.**

- Do not look ahead at the questions in Module 2 [or back at the questions in Module 1] of your exam materials.
- After you have checked your work, close your exam materials.

You may refer to this page at any time during this portion of the exam.

THIS PAGE IS INTENTIONALLY BLANK

# **Appendix D:**

## **Code of Conduct for Test Takers— Spanish Translation**



## CÓDIGO DE CONDUCTA PARA LOS EXAMINADOS

### DEBES...

- Escuchar, leer y seguir todas las instrucciones que te den.
- Hacer preguntas si no entiendes las instrucciones.
- Leer cada pregunta con cuidado, especialmente las de opción múltiple que piden “la mejor respuesta”. Leer también las preguntas abiertas cuidadosamente antes de contestar.
- Tener cuidado al marcar tus respuestas para que no te saltes espacios ni llenes secciones equivocadas.
- Asegurarte de llenar completamente el círculo correspondiente a la(s) respuesta(s) que escogiste, y borrar completamente cualquier respuesta que quieras cambiar.
- Mantener la vista en tu propia prueba.
- Tratar de contestar cada una de las preguntas.
- Verificar que hayas contestado todas las preguntas de la sección de la prueba antes de cerrar tu folleto de prueba o de enviar tus respuestas finales por internet.
- Notificar a tu maestro o al director de la escuela si sospechas que alguien está haciendo trampa.

### NO DEBES...

- Tener apuntes en tu posesión durante la prueba.
- Tener aparatos electrónicos no autorizados (teléfono celular, teléfono inteligente, reloj inteligente, audífonos, etc.) en tu posesión durante la prueba. Ten en cuenta que puedes tener una calculadora autorizada, si es que se aplica, durante la prueba.
- Compartir la calculadora con los demás.
- Usar los círculos del folleto de respuestas para eliminar respuestas posiblemente incorrectas o posiblemente correctas. Marca solamente el círculo de la(s) respuesta(s) correcta(s) que hayas escogido.
- Hablar con los demás sobre las preguntas de la prueba, ya sea durante o después de la prueba. (Debe garantizarse a los estudiantes que pueden hablar con sus padres o tutores sobre el proceso de evaluación o algo que les preocupe).
- Tomar notas acerca de la prueba para compartirlas con otros estudiantes.
- Salir de una sesión de prueba en línea antes de que se termine o antes de que te indiquen que lo hagas.
- Usar las redes sociales para publicar información acerca de la prueba y/o preguntas de la prueba.



## CODE OF CONDUCT FOR TEST TAKERS

### DO ...

- Listen to, read, and follow all directions given.
- Ask questions if you do not understand the directions.
- Read each question carefully, especially multiple-choice items that ask for the “best answer.” Also, be sure to read any open-ended items carefully before responding.
- Be careful when marking your answers so that you do not skip spaces or fill in the wrong sections.
- Make sure to completely fill in the bubble for the answer(s) you select and erase completely any answers you change.
- Keep your eyes on your own test.
- Try to answer each test item.
- Check that you have completed all the test items in the test section before closing your test booklet or submitting your final responses online.
- Report any suspected cheating to your teacher or principal.

### DO NOT ...

- Have notes in your possession during the test.
- Have any unapproved electronic devices (cell phones, smartphones, smartwatches, earbuds, etc.) in your possession during the test. Note, you may have approved calculators, if applicable, during the test.
- Share a calculator with others.
- Use the bubbles in the answer booklet to either eliminate possible incorrect answers or possible correct answers by making marks in multiple bubbles and erasing. Mark only the bubble for the correct answer(s) you have chosen.
- Talk with others about questions on the test during or after the test. (Students should be assured that they may discuss the testing process or issues of concern with their parents/guardians.)
- Take notes about the test to share with others.
- Leave an online test session until the session is complete or until instructed to do so.
- Use social media to post information about the test and/or test items.

THIS PAGE IS INTENTIONALLY BLANK



# **Appendix E:**

## **Pennsylvania Calculator Policy— Spanish Translation**



## GUÍA DE PENNSYLVANIA SOBRE EL USO DE CALCULADORAS

Si un estudiante decide usar una calculadora que no esté incluida en las opciones en línea para los exámenes de Keystone o PSSA, en las secciones donde se permita usar calculadora, el estudiante debe apegarse a las pautas indicadas abajo. Le corresponde al Coordinador de Exámenes de la Escuela asegurarse que se implementen y cumplan todas las reglas del uso de calculadoras e incluso asegurarse que las calculadoras no tengan programas u otros datos almacenados en su memoria que no sean los instalados de fábrica. Tome en cuenta que si un estudiante quiere restaurar los programas borrados, tendrá que guardar una copia de respaldo antes del examen. Además, se debe vaciar la memoria de la calculadora antes y después de cada sesión del examen. Esta tarea la debe realizar el administrador o supervisor del examen. Los estudiantes no realizan esta tarea.

Antes de la sesión del examen, el supervisor o administrador del examen debe activar el modo de prueba o modo de examen en las calculadoras que tienen el modo de prueba o de examen. Las instrucciones para activar el modo de prueba o el modo de examen se proporcionan en el sitio Web de PDE.

No se permite usar lo siguiente en los exámenes de PSSA o Keystone:

- Dispositivos cuyo propósito principal no es funcionar como calculadoras, tales como teléfonos celulares, teléfonos inteligentes, relojes inteligentes, agendas electrónicas, computadoras portátiles, tabletas, organizadores electrónicos de bolsillo, etc.
- Calculadoras con transmisión por ondas infrarrojas, Wi-Fi, Bluetooth o algún otro medio inalámbrico, a menos que se desactive esta función inalámbrica
- Calculadoras con Sistema Algebraico Computacional (SAC) integrado
- Calculadoras que hacen ruido, que tienen cinta de papel, que necesitan enchufarse o que hablan; estas calculadoras específicas pueden usarse solamente como acomodamiento requerido de acuerdo a las Pautas de Acomodamiento
- Calculadoras compartidas por estudiantes durante una sesión de prueba
- Ningún programa que no sea de fábrica con funciones añadidas y ninguna información almacenada en la calculadora

En esta guía sobre el uso de calculadoras se pretende describir de manera general lo que no está permitido. No representa una lista exhaustiva y específica de calculadoras, aparatos o tecnologías que no se pueden usar en los exámenes de PSSA o Keystone. Tome en cuenta que a medida que la tecnología cambie, esta guía también puede cambiar.



## PENNSYLVANIA CALCULATOR POLICY

If a student chooses to use a calculator (other than the online options) on the Keystone Exams or PSSA in sections where the calculator is permitted, the student must adhere to the guidelines listed below. It is incumbent upon the School Assessment Coordinator to ensure that all calculator policies are implemented and followed, including making sure calculators have no programs or other data stored in their memory other than those that are factory installed. Please note that if a student wants to restore the deleted programs, the student will need to back up these programs prior to the assessment. In addition, the memory must be cleared on the calculator prior to and following each test session of the assessment. This task must be completed by the Test Administrator or Proctor. Students are not to complete this task.

Calculators with testing mode or exam mode must have the testing mode or exam mode activated prior to the exam session by the Test Administrator or Proctor. Directions to activate testing mode or exam mode are provided on the PDE website.

The following are not permitted for the PSSA or Keystone Exams:

- Devices that have a primary purpose other than functioning as a calculator such as cell phones, smartphones, smartwatches, PDAs, laptops, tablets, pocket organizers, etc.
- Calculators with infrared, Wi-Fi, Bluetooth, or other beaming or wireless capabilities, unless the beaming or wireless capabilities are disabled
- Calculators with built-in Computer Algebra Systems (CAS)
- Calculators that make noise, have paper tape, need to be plugged in, or talk; these specific calculators can only be used as a required accommodation as stated in the Accommodations Guidelines
- Calculators shared by students during a test session
- Any and all non-factory (add-on) programs or information stored in the calculator

This calculator policy is intended to be a general description of what is not allowed. It is not meant to be an exhaustive list of specific calculators, devices, or technologies that must not be used on the PSSA or Keystone Exams. Please note that as technology changes, this policy may also change.

THIS PAGE IS INTENTIONALLY BLANK

# **Appendix F:**

## **Algebra I and Biology Constructed-Response Scoring Guidelines—Spanish Translation**

## PREGUNTAS DE RESPUESTA RAZONADA DE ÁLGEBRA I

### DESCRIPCIÓN GENERAL DE LAS PAUTAS DE CALIFICACIÓN

#### 4 Puntos

- La respuesta demuestra una comprensión *exhaustiva* de los conceptos y procedimientos matemáticos requeridos por la tarea.
- La respuesta proporciona respuesta(s) correcta(s) que muestran procedimientos matemáticos claros y completos, y una explicación correcta, según lo requiere la tarea. La respuesta puede contener un “defecto” menor o una omisión menor en el trabajo o explicación que no quite mérito a la demostración de una comprensión *exhaustiva*.

#### 3 Puntos

- La respuesta demuestra una comprensión *general* de los conceptos y procedimientos matemáticos requeridos por la tarea.
- La respuesta y la explicación (según lo requiere la tarea) están en su mayor parte completas y correctas. La respuesta puede contener defectos u omisiones menores que no quiten mérito a la demostración de una comprensión *general*.

#### 2 Puntos

- La respuesta demuestra una comprensión *parcial* de los conceptos y procedimientos matemáticos requeridos por la tarea.
- La respuesta es en cierta medida correcta con una comprensión *parcial* de los conceptos y/o procedimientos matemáticos requeridos que se demuestran y/o explican. La respuesta puede contener una parte del trabajo que esté incompleta o que no sea clara.

#### 1 Punto

- La respuesta demuestra una comprensión *mínima* de los conceptos y procedimientos matemáticos requeridos por la tarea.

#### 0 Puntos

- La respuesta no tiene ninguna contestación correcta y tiene evidencia *insuficiente* para demostrar comprensión alguna de los conceptos y procedimientos matemáticos requeridos por la tarea.

**ALGEBRA I CONSTRUCTED-RESPONSE QUESTIONS****GENERAL DESCRIPTION OF SCORING GUIDELINES****4 Points**

- The response demonstrates a *thorough* understanding of the mathematical concepts and procedures required by the task.
- The response provides correct answer(s) with clear and complete mathematical procedures shown and a correct explanation, as required by the task. Response may contain a minor “blemish” or omission in work or explanation that does not detract from demonstrating a *thorough* understanding.

**3 Points**

- The response demonstrates a *general* understanding of the mathematical concepts and procedures required by the task.
- The response and explanation (as required by the task) are mostly complete and correct. The response may have minor errors or omissions that do not detract from demonstrating a *general* understanding.

**2 Points**

- The response demonstrates a *partial* understanding of the mathematical concepts and procedures required by the task.
- The response is somewhat correct with *partial* understanding of the required mathematical concepts and/or procedures demonstrated and/or explained. The response may contain some work that is incomplete or unclear.

**1 Point**

- The response demonstrates a *minimal* understanding of the mathematical concepts and procedures required by the task.

**0 Points**

- The response has no correct answer and *insufficient* evidence to demonstrate any understanding of the mathematical concepts and procedures required by the task.

**PREGUNTAS DE RESPUESTA RAZONADA DE BIOLOGÍA****DESCRIPCIÓN GENERAL DE LAS PAUTAS DE CALIFICACIÓN****3 Puntos**

- La respuesta demuestra una comprensión *exhaustiva* del contenido, conceptos y/o procedimientos científicos requeridos por la(s) tarea(s).
- La respuesta proporciona una respuesta clara, completa y correcta conforme a lo requerido por la(s) tarea(s). La respuesta puede contener un defecto menor o una omisión menor en el trabajo o explicación que no quite mérito a la demostración de una comprensión *exhaustiva*.

**2 Puntos**

- La respuesta demuestra una comprensión *parcial* del contenido, conceptos y/o procedimientos científicos requeridos por la(s) tarea(s).
- La respuesta es en cierta medida correcta con una comprensión *parcial* del contenido, conceptos y/o procedimientos científicos requeridos que se demuestran y/o explican. La respuesta puede contener una parte del trabajo que esté incompleta o que no sea clara.

**1 Punto**

- La respuesta demuestra una comprensión *mínima* del contenido, conceptos y/o procedimientos científicos requeridos por la(s) tarea(s).
- La respuesta es en cierta medida correcta con una comprensión *mínima* del contenido, conceptos y/o procedimientos científicos requeridos que se demuestran y/o explican. La respuesta puede contener una parte del trabajo que esté incompleta o que no sea clara.

**0 Puntos**

- La respuesta proporciona una evidencia *insuficiente* para demostrar comprensión alguna del contenido, conceptos y/o procedimientos científicos, conforme a lo requerido por la(s) tarea(s).
- La respuesta puede mostrar solo información copiada o parafraseada de la pregunta o información correcta *insuficiente* para recibir una puntuación de 1.



**BIOLOGY CONSTRUCTED-RESPONSE QUESTIONS****GENERAL DESCRIPTION OF SCORING GUIDELINES****3 Points**

- The response demonstrates a *thorough* understanding of the scientific content, concepts, and/or procedures required by the task(s).
- The response provides a clear, complete, and correct response as required by the task(s). The response may contain a minor blemish or omission in work or explanation that does not detract from demonstrating a *thorough* understanding.

**2 Points**

- The response demonstrates a *partial* understanding of the scientific content, concepts, and/or procedures required by the task(s).
- The response is somewhat correct with *partial* understanding of the required scientific content, concepts, and/or procedures demonstrated and/or explained. The response may contain some work that is incomplete or unclear.

**1 Point**

- The response demonstrates a *minimal* understanding of the scientific content, concepts, and/or procedures required by the task(s).
- The response is somewhat correct with *minimal* understanding of the required scientific content, concepts, and/or procedures demonstrated and/or explained. The response may contain some work that is incomplete or unclear.

**0 Points**

- The response provides *insufficient* evidence to demonstrate any understanding of the scientific content, concepts, and/or procedures as required by the task(s).
- The response may show only information copied or rephrased from the question or *insufficient* correct information to receive a score of 1.

THIS PAGE IS INTENTIONALLY BLANK

THIS PAGE IS INTENTIONALLY BLANK



M55036579339001

SPRING 2024  
ALGEBRA I AND BIOLOGY  
KEYSTONE EXAMS  
SPANISH TRANSLATION  
DIRECTIONS FOR PAPER AND PENCIL ADMINISTRATION